

B4682 P0203

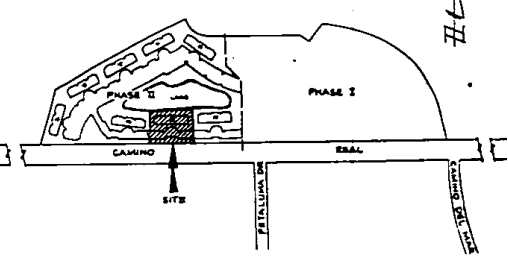
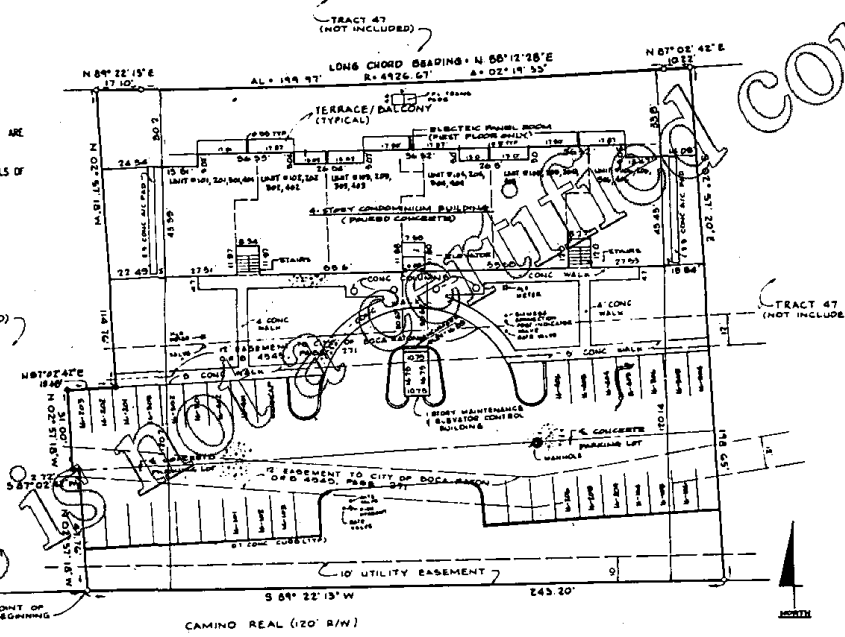
# CONDOMINIUM 16, OF WHITEHALL AT CAMINO REAL, A CONDOMINIUM

BOCA DEL MAR

EXHIBIT B

TO THE DECLARATION OF CONDOMINIUM

- NOTES**
1. IMPROVEMENTS SHOWN HEREON ARE EXISTING UNLESS OTHERWISE NOTED.
  2. SEE SHEETS 4 THROUGH 7 FOR DETAILS OF UNIT BOUNDARIES.



VICINITY SKETCH

**DESCRIPTION OF CONDO NO. 16**

A CERTAIN PARCEL OF LAND LYING IN SECTION 27, TOWNSHIP 47 SOUTH, RANGE 42 EAST, PALM BEACH COUNTY, FLORIDA, BEING MORE PARTICULARLY DESCRIBED AS FOLLOWS:

COMMENCING AT THE SOUTHWEST CORNER OF THAT CERTAIN PARCEL OF LAND KNOWN AS TRACT 47, AS SAME IS SHOWN ON THE 'PLAT OF BOCA DEL MAR NO. 3', RECORDED IN PLAT BOOK 30, PAGES 82 THROUGH 84, INCLUSIVE, PUBLIC BEER OF PALM BEACH COUNTY, FLORIDA, THENCE NORTH BY 22°13' EAST (BEARINGS MENTIONED HEREIN ARE IN THE NORTH) OF SAID TRACT 47 OF BOCA DEL MAR NO. 3) A DISTANCE OF 609.12 FEET TO THE POINT OF BEGINNING; TH

1. NORTH 02°57'18" WEST, A DISTANCE OF 47.76 FEET; THENCE...
2. SOUTH 87°02'42" WEST, 2.72 FEET; THENCE...
3. NORTH 02°57'18" WEST, 31.00 FEET; THENCE...
4. NORTH 87°02'42" EAST, 18.48 FEET; THENCE...
5. NORTH 02°57'18" WEST, 114.76 FEET; THENCE...
6. NORTH 89°22'13" EAST, 12.10 FEET; THENCE...
7. EASTERLY ALONG THE ARC OF A 4,926.87 FOOT RADIUS CURVE, CONCAVE NORTH WHOSE LONG CHORD BEARS 88°12'28" EAST, AN ARC LENGTH OF 199.97 FEET; THENCE...
8. NORTH 87°02'42" EAST, 10.22 FEET; THENCE...
9. SOUTH 02°57'20" EAST, 198.65 FEET; THENCE...
10. SOUTH 89°22'13" WEST, 243.20 FEET, MORE OR LESS, TO THE POINT OF BEGINNING.

CONTAINING 1.050 ACRES, MORE OR LESS.

**LEGEND**

- = 8" BAY BEON ROD - 1/4" X 1/8" CAP
- = 6" BAY CHILL WOOD
- = 6" 1" ON CONCRETE

THIS INSTRUMENT PREPARED BY KENNETH L. SCRAPE, AT THE OFFICE OF KENNETH L. SCRAPE, INC., PROFESSIONAL LAND SURVEYORS, 103A BOULEVARD, SUITE 103, PALM BEACH GARDENS, FLORIDA 33414

**SURVEYOR'S NOTES**

1. THIS SURVEY PERFORMED FOR BUREAU OF DIVISION CORPORATION AND IS NOT ADEQUATE.
2. NO RECORD OF THE PUBLIC RECORDS HAS BEEN MADE BY THIS OFFICE.
3. VISIBLE ENCROACHMENTS ARE AS SHOWN.
4. DESCRIPTION FURNISHED BY CLIENT.

**SURVEYOR'S CERTIFICATION**

I, KENNETH L. SCRAPE, BEING THE BEST OF MY KNOWLEDGE, BELIEVE AND BELIEVE THAT THE SURVEY WAS CONDUCTED ACCORDING TO THE BEST AND MOST ACCURATE METHODS AND STANDARDS OF THE SURVEYING PROFESSION AND THAT THE INFORMATION CONTAINED HEREIN IS TRUE AND CORRECT.

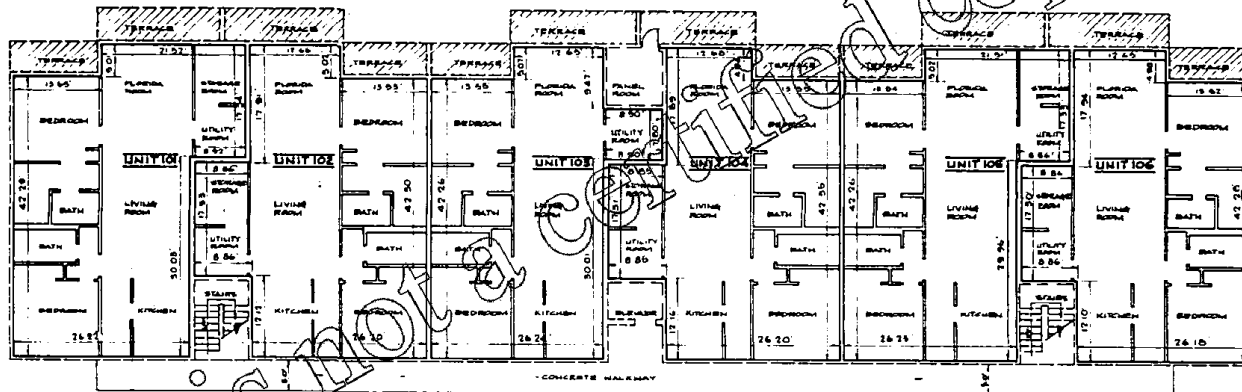
DATE OF SURVEY: 10/15/2013

**SURVEY AND SITE PLAN**

CONDOMINIUM 16	
OF	
WHITEHALL AT CAMINO REAL	
A CONDOMINIUM	
KENNETH L. SCRAPE, JPA	
PROFESSIONAL LAND SURVEYORS	
PALM BEACH GARDENS, FLORIDA, PH. (305) 427-	
FIELD DRAWING	DATE: 10/15/2013
OFFICE DRAWING	DATE: 10/15/2013
DATE: 10/15/2013	DATE: 10/15/2013

# CONDOMINIUM 16 , OF WHITEHALL AT CAMINO REAL, A CONDOMINIUM

BOCA DEL MAR  
EXHIBIT B  
TO THE DECLARATION OF CONDOMINIUM



## FIRST FLOOR UNIT BOUNDARIES

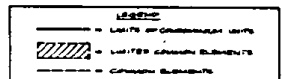
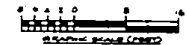
1st FLOOR

FINISHED FLOOR ELEVATION= 17.07

FINISHED CEILING ELEVATION= 25.18



- NOTES:
1. IMPROVEMENTS SHOWN ARE EXISTING UNLESS OTHERWISE NOTED.
  2. ALL DIMENSIONS SHOWN IN THE CONDOMINIUM UNITS WHERE APPLICABLE ARE TO THE INTERIOR UNPAINTED FINISHED (OR UNFINISHED) SURFACE.
  3. ALL INTERIOR ANGLES IN THE CONDOMINIUM UNITS ARE 90° UNLESS OTHERWISE NOTED.
  4. ELEVATIONS SHOWN HEREON ARE IN FEET AND DECIMAL PARTS THEREOF AND REFER TO N.G.V.D., 1929.
  5. BENCHMARK IS 1-CUT ON TOP OF CURB AT FRONT OF MAINTENANCE & ELEVATOR CONTROL BUILDING. ELEVATION= 48.89 N.G.V.D., 1929.
  6. SEE SHEET 3 FOR EXTERIOR BUILDING DIMENSIONS.
  7. FINISH FLOOR AND FINISH CEILING ELEVATIONS ARE AS SHOWN.



CONDOMINIUM 16	
OF	
WHITEHALL AT CAMINO REAL	
A CONDOMINIUM	
KENNETH L. SCRAPE, Jr.	
PROFESSIONAL LAND SURVEYOR	
PALM BEACH GARDENS, FLORIDA, P.N. 13051-6	
FIELD DRAWING	DATE 10/14/20
OFFICE P.L.S.	DATE 10/14/20
BY K.L.S.	DATE 10/14/20

THIS INSTRUMENT PREPARED BY KENNETH L. SCRAPE, AT THE OFFICE OF KENNETH L. SCRAPE, INC., PROFESSIONAL LAND SURVEYORS, 2700 PGA BOULEVARD, SUITE 103, PALM BEACH GARDENS, FLORIDA 33410

This is not a certified copy

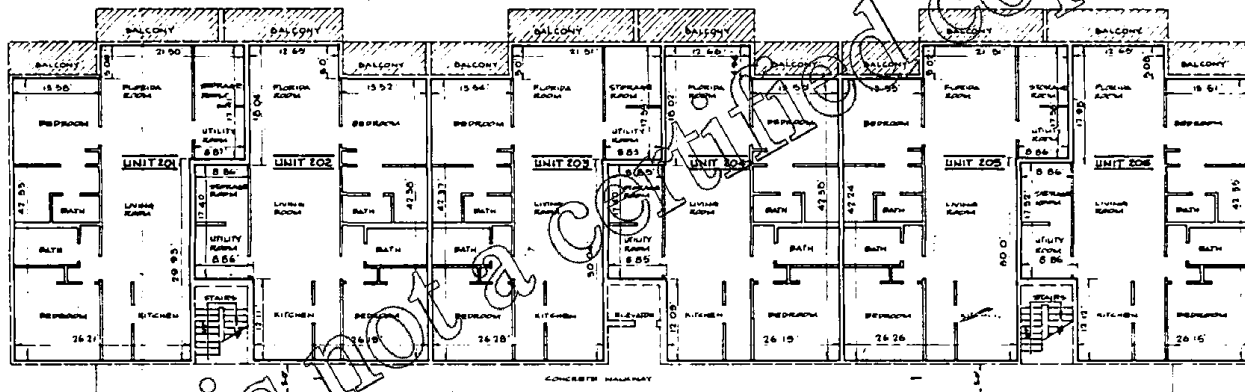
B4682 P0205

# CONDOMINIUM 16, OF WHITEHALL AT CAMINO REAL, A CONDOMINIUM

BOCA DEL MAR

EXHIBIT B

TO THE DECLARATION OF CONDOMINIUM



### SECOND FLOOR UNIT BOUNDARIES

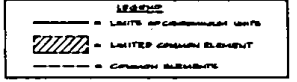
2ND FLOOR

FINISHED FLOOR ELEVATION: 25.70

FINISHED CEILING ELEVATION: 53.61



- NOTES**
1. IMPROVEMENTS SHOWN ARE EXISTING UNLESS OTHERWISE NOTED.
  2. ALL DIMENSIONS SHOWN IN THE CONDOMINIUM UNITS WHERE APPLICABLE ARE TO THE INTERIOR UNPAINTED FINISHED OR UNFINISHED SURFACE.
  3. ALL INTERIOR ANGLES IN THE CONDOMINIUM UNITS ARE 90° UNLESS OTHERWISE NOTED.
  4. ELEVATIONS SHOWN HEREON ARE IN FEET AND DECIMAL PARTS THEREOF AND REFER TO M.C.V.D., 1929.
  5. BENCHMARK IS 3'-OUT ON TOP OF CURB AT FRONT OF MAINTENANCE & ELEVATOR CONTROL BUILDING. ELEVATION: 26.89 M.C.V.D., 1929.
  6. SEE SHEET 3 FOR EXTERIOR BUILDING DIMENSIONS.
  7. FINISH FLOOR AND FINISH CEILING ELEVATIONS ARE AS SHOWN.



<b>CONDOMINIUM 16</b>	
OF	
<b>WHITEHALL AT CAMINO REAL</b>	
<b>A CONDOMINIUM</b>	
<b>KENNETH L. SCRAPE, JM</b>	
PROFESSIONAL LAND SURVEYOR	
PALM BEACH GARDENS, FLORIDA, PH. (305) 622-7400	
FIELD & OFFICE	DATE
10/27/2005	10/27/2005
BY	DATE
KL	10/27/2005

THIS INSTRUMENT PREPARED BY KENNETH L. SCRAPE, AT THE OFFICE OF KENNETH L. SCRAPE, INC., PROFESSIONAL LAND SURVEYORS, 2700 PGA BOULEVARD, SUITE 103, PALM BEACH GARDENS, FLORIDA 33410

This is not a certified copy

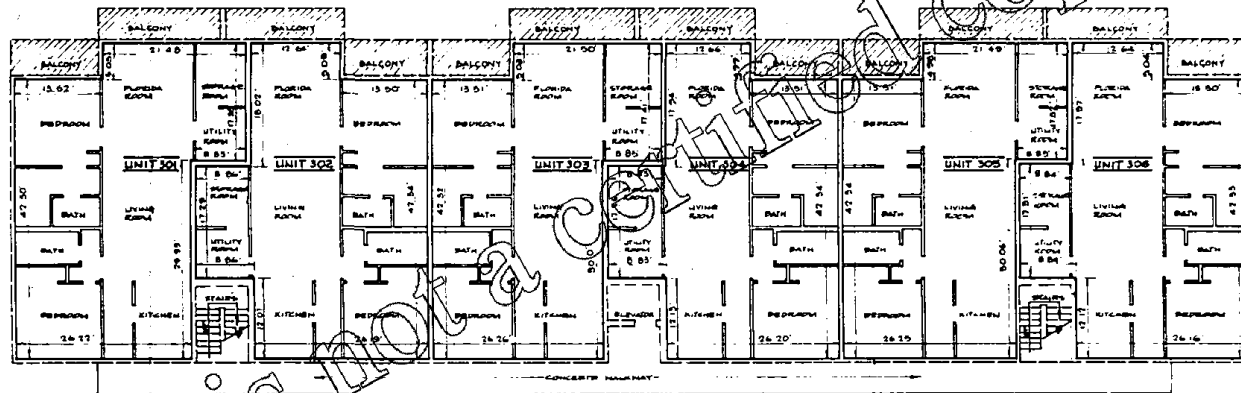
B4682 P0206

# CONDOMINIUM 16, OF WHITEHALL AT CAMINO REAL, A CONDOMINIUM

BOCA DEL MAR

EXHIBIT B

TO THE DECLARATION OF CONDOMINIUM



### THIRD FLOOR UNIT BOUNDARIES

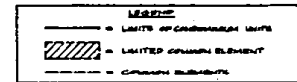
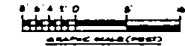
3RD FLOOR

FINISHED FLOOR ELEVATION: 34.56

FINISHED CEILING ELEVATION: 42.47



- NOTES**
1. IMPROVEMENTS SHOWN ARE EXISTING UNLESS OTHERWISE NOTED.
  2. ALL DIMENSIONS SHOWN IN THE CONDOMINIUM UNITS WHERE APPLICABLE ARE TO THE INTERIOR UNPAINTED FINISHED (OR UNFINISHED) SURFACE.
  3. ALL INTERIOR ANGLES IN THE CONDOMINIUM UNITS ARE 90° UNLESS OTHERWISE NOTED.
  4. ELEVATIONS SHOWN HEREIN ARE IN FEET AND DECIMAL PARTS THEREOF AND REFER TO U.S.C.F.D., 1929.
  5. BENCHMARK IS X-CUT ON TOP OF CURB AT FRONT OF MAINTENANCE & ELEVATOR CONTROL BUILDING. ELEVATION: 46.829 U.S.C.F.D., 1929.
  6. SEE SHEET 3 FOR EXTERIOR BUILDING DIMENSIONS.
  7. FINISH FLOOR AND FINISH CEILING ELEVATIONS ARE AS SHOWN.



CONDOMINIUM 16	
OF	
WHITEHALL AT CAMINO REAL	
A CONDOMINIUM	
KENNETH L. SCAPE, INC.	
PROFESSIONAL LAND SURVEYORS	
PALM BEACH GARDENS, FLORIDA, P.A. 13551-627-3	
FILED 2/28/2010	BY: J. MC G. S.
OFFICE 248	DATE: 02/14/2010
SCALE: AS SHOWN	SHEET: 6 OF 6

THIS INSTRUMENT PREPARED BY KENNETH L. SCAPE, AT THE OFFICE OF KENNETH L. SCAPE, INC., PROFESSIONAL LAND SURVEYORS, 2700 PGA BOULEVARD, SUITE 103, PALM BEACH GARDENS, FLORIDA 33410

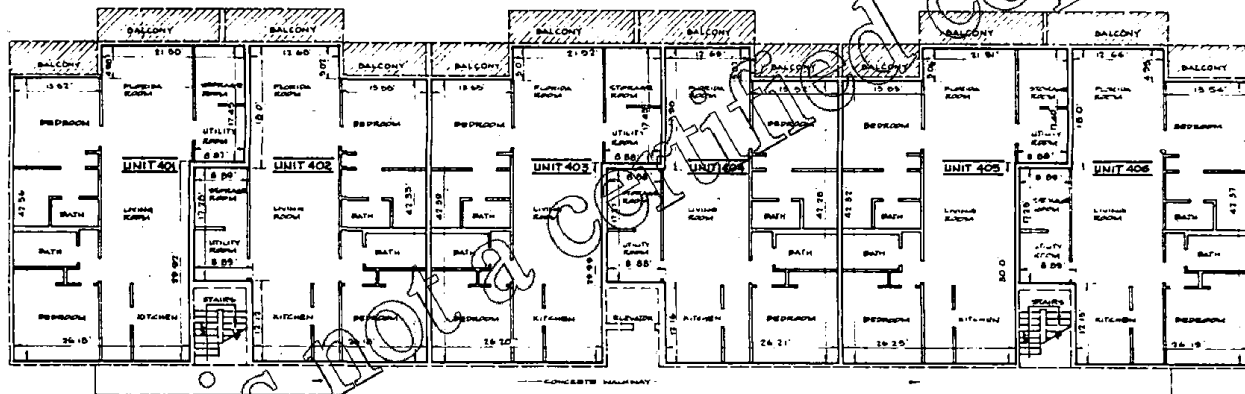
# CONDOMINIUM 16, OF WHITEHALL AT CAMINO REAL, A CONDOMINIUM

B4682 P0207

BOCA DEL MAR

EXHIBIT B

TO THE DECLARATION OF CONDOMINIUM



This is not a certified copy

## FOURTH FLOOR UNIT BOUNDARIES

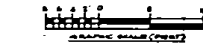
4th FLOOR

FINISHED FLOOR ELEVATION: 45.99

FINISHED CEILING ELEVATION: 52.10



- NOTES**
1. IMPROVEMENTS SHOWN ARE EXISTING UNLESS OTHERWISE NOTED.
  2. ALL DIMENSIONS SHOWN IN THE CONDOMINIUM UNITS WHERE APPLICABLE ARE TO THE INTERIOR UNPAINTED FINISHED (OR UNFINISHED) SURFACE.
  3. ALL INTERIOR ANGLES IN THE CONDOMINIUM UNITS ARE 90° UNLESS OTHERWISE NOTED.
  4. ELEVATIONS SHOWN HEREIN ARE IN FEET AND DECIMAL PARTS THEREOF AND REFER TO M.G.V.D., 1929.
  5. BENCHMARK IS X-CUT ON TOP OF CURB AT FRONT OF MAINTENANCE & ELEVATOR CONTROL BUILDING. ELEVATION: 16.89 M.G.V.D., 1929.
  6. SEE SHEET 3 FOR EXTERIOR BUILDING DIMENSIONS.
  7. FINISH FLOOR AND FINISH CEILING ELEVATIONS ARE AS SHOWN.



LEGEND	
—	UNITS OF CONDOMINIUM UNITS
▨	UNITED COMMON ELEMENT
---	COMMON ELEMENTS

<b>CONDOMINIUM 16</b>	
OF	
<b>WHITEHALL AT CAMINO REAL</b>	
<b>A CONDOMINIUM</b>	
<b>KENNETH L. SCRAPE, INC.</b>	
PROFESSIONAL LAND SURVEYORS	
PALM BEACH GARDENS, FLORIDA, PH. (305) 627-	
FILE # 030806	DATE 10/14/2009
DRAWN BY	DATE

THIS INSTRUMENT PREPARED BY KENNETH L. SCRAPE, AT THE OFFICE OF KENNETH L. SCRAPE, INC., PROFESSIONAL LAND SURVEYORS, 2700 PGA BOULEVARD, SUITE 103, PALM BEACH GARDENS, FLORIDA 33410