

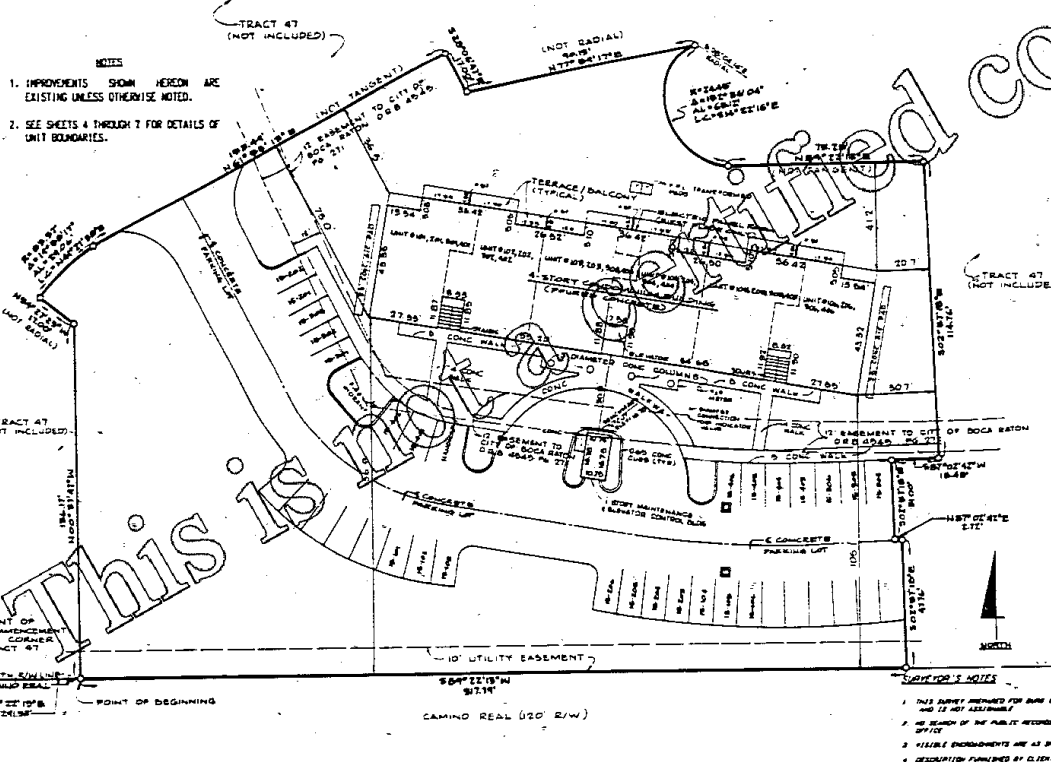
B4677 P0509

CONDOMINIUM 15, OF WHITEHALL AT CAMINO REAL, A CONDOMINIUM

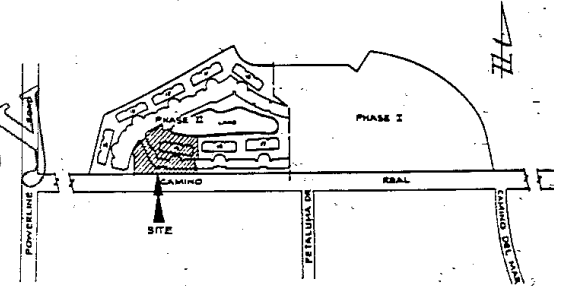
BOCA DEL MAR

EXHIBIT B

TO THE DECLARATION OF CONDOMINIUM



- NOTES
1. IMPROVEMENTS SHOWN HEREON ARE EXISTING UNLESS OTHERWISE NOTED.
 2. SEE SHEETS 4 THROUGH 7 FOR DETAILS OF UNIT BOUNDARIES.



VICINITY SKETCH

DESCRIPTION OF CONDO NO. 15

A CERTAIN PARCEL OF LAND LYING IN SECTION 27, TOWNSHIP 47 SOUTH, RANGE 42 EAST, PALM BEACH COUNTY, FLORIDA, BEING MORE PARTICULARLY DESCRIBED AS FOLLOWS:

COMMENCING AT THE SOUTHWEST CORNER OF THAT CERTAIN PARCEL OF LAND KNOWN AS TRACT 47, AS SAID, IS SHOWN ON THE PLAT OF BOCA DEL MAR NO. 3, RECORDED IN PLAT BOOK 30, PAGES 82 THROUGH 84, INCLUSIVE, PUBLIC RECORDS OF PALM BEACH COUNTY, FLORIDA, THENCE NORTH 89°22'13" EAST (BEARINGS MENTIONED HEREIN ARE IN THE MERIDIAN OF SAID TRACT 47 OF BOCA DEL MAR NO. 3) A DISTANCE OF 291.33 FEET TO THE POINT OF BEGINNING; THENCE ALONG THE FOLLOWING NUMBERED COURSES:

1. NORTH 00°37'47" WEST, 136.17 FEET; THENCE...
2. NORTH 54°27'23" WEST, 17.00 FEET; THENCE...
3. NORTHEAST ALONG THE ARC OF AN 83.37 FOOT RADIUS CURVE, CONCAVE SOUTHWEST WHOSE LONG CHORD BEARS NORTH 44°27'38" EAST, AN ARC DISTANCE 29.06 FEET; THENCE...
4. NORTH 61°59'13" EAST, 153.49 FEET; THENCE...
5. SOUTH 28°06'47" EAST, 11.00 FEET; THENCE...
6. NORTH 77°59'17" EAST, 90.13 FEET; THENCE...
7. SOUTHERLY, ALONG THE ARC OF A 24.45 FOOT RADIUS CURVE, CONCAVE EAST WHOSE LONG CHORD BEARS SOUTH 14°22'16" EAST, AN ARC DISTANCE OF 65.12 FEET; THENCE...
8. NORTH 89°22'13" EAST, 75.29 FEET; THENCE...
9. SOUTH 02°57'18" EAST, 114.76 FEET; THENCE...
10. SOUTH 87°02'42" WEST, 16.48 FEET; THENCE...
11. SOUTH 02°57'18" EAST, 31.00 FEET; THENCE...
12. NORTH 07°02'42" EAST, 2.72 FEET; THENCE...
13. SOUTH 02°57'18" EAST, 47.76 FEET; THENCE...
14. SOUTH 89°22'13" WEST, 317.79 FEET; MORE OR LESS, TO THE POINT OF BEGINNING.

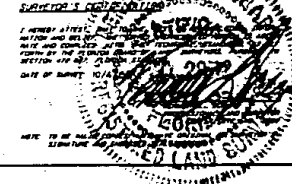
CONTAINING 1.535 ACRES MORE OR LESS.

THIS INSTRUMENT PREPARED BY KENNETH L. SCRAPE, AT THE OFFICE OF KENNETH L. SCRAPE, INC., PROFESSIONAL LAND SURVEYORS, 2700 PMA BOULEVARD, SUITE 103, PALM BEACH GARDENS, FLORIDA 33410



NOTES FOR THE BUYER

1. THIS SURVEY PREPARED FOR BUREAU OF CIVIL ENGINEERING AND IS NOT ASSIGNABLE.
2. NO RECORD OF THE PUBLIC RECORDS HAS BEEN MADE BY THIS SURVEYOR.
3. ALLIBLE ENCUMBRANCES ARE AS SHOWN.
4. DESCRIPTION FURNISHED BY CLIENT.



CONDOMINIUM 15	
OF	
WHITEHALL AT CAMINO REAL	
A CONDOMINIUM	
KENNETH L. SCRAPE, INC.	
PROFESSIONAL LAND SURVEYORS	
PALM BEACH GARDENS, FLORIDA, PH. (1305)-627	
FIELD 1/10	10' X 25' 1/2" X 40' 0"
OFFICE 3/84	DATE 10/1/09
BY K.S.	NO. 225

SURVEY AND SITE PLAN

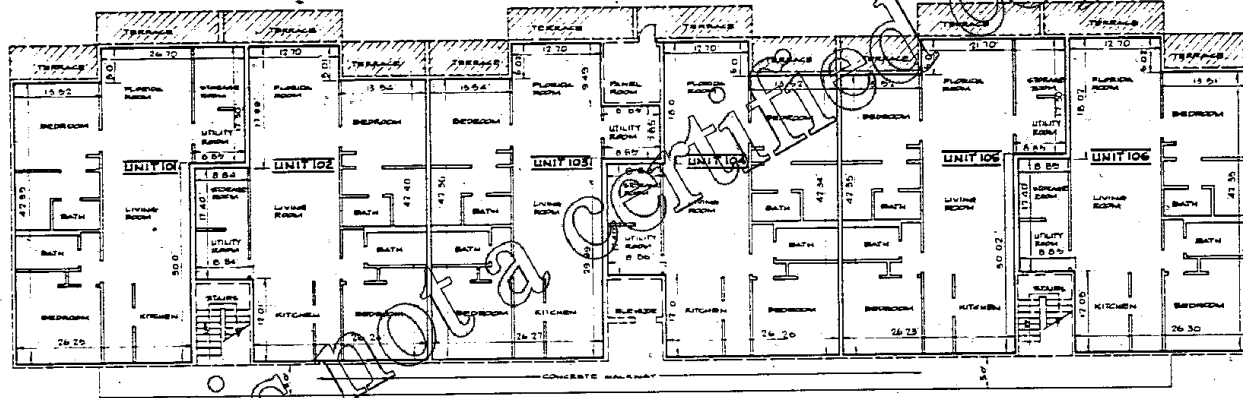
B4677 P0510

CONDOMINIUM 15, OF WHITEHALL AT CAMINO REAL, A CONDOMINIUM

BOCA DEL MAR

EXHIBIT B

TO THE DECLARATION OF CONDOMINIUM



FIRST FLOOR UNIT BOUNDARIES

1ST FLOOR

FINISHED FLOOR ELEVATION= 16.98

FINISHED CEILING ELEVATION= 25.15



NOTES

1. IMPROVEMENTS SHOWN ARE EXISTING UNLESS OTHERWISE NOTED.
2. ALL DIMENSIONS SHOWN IN THE CONDOMINIUM UNITS WHERE APPLICABLE ARE TO THE INTERIOR UNPAINTED FINISHED (OR UNFINISHED) SURFACE.
3. ALL INTERIOR ANGLES IN THE CONDOMINIUM UNITS ARE 90° UNLESS OTHERWISE NOTED.
4. ELEVATIONS SHOWN HEREIN ARE IN FEET AND DECIMAL PARTS THEREOF AND REFER TO N.G.V.D., 1929.
5. BENCHMARK IS 3'-OUT ON TOP OF CURB AT FRONT OF MAINTENANCE & ELEVATOR CONTROL BUILDING. ELEVATION= 16.78 N.G.V.D., 1929.
6. SEE SHEET 3 FOR EXTERIOR BUILDING DIMENSIONS.
7. FINISH FLOOR AND FINISH CEILING ELEVATIONS ARE AS SHOWN.



LEGEND

- LIMITS OF CONDOMINIUM UNITS
- ▨ LIMITED COMMON ELEMENTS
- COMMON ELEMENTS

CONDOMINIUM 15

OF
WHITEHALL AT CAMINO REAL
A CONDOMINIUM

KENNETH L. SCRAPE, I.M.
PROFESSIONAL LAND SURVEYORS
PALM BEACH GARDENS, FLORIDA, PH. (305)-627

THIS INSTRUMENT PREPARED BY KENNETH L. SCRAPE, AT THE OFFICE OF KENNETH L. SCRAPE, INC., PROFESSIONAL LAND SURVEYORS, 2700 PGA BOULEVARD, SUITE 103, PALM BEACH GARDENS, FLORIDA 33410

FILE # 2018	SP 1	AC 25	CD 40	ED
OFFICE 000	DATE 9/15/09	DRAWN 000		
CD 0	AS 2	SHEET 4		

This is not a certified copy

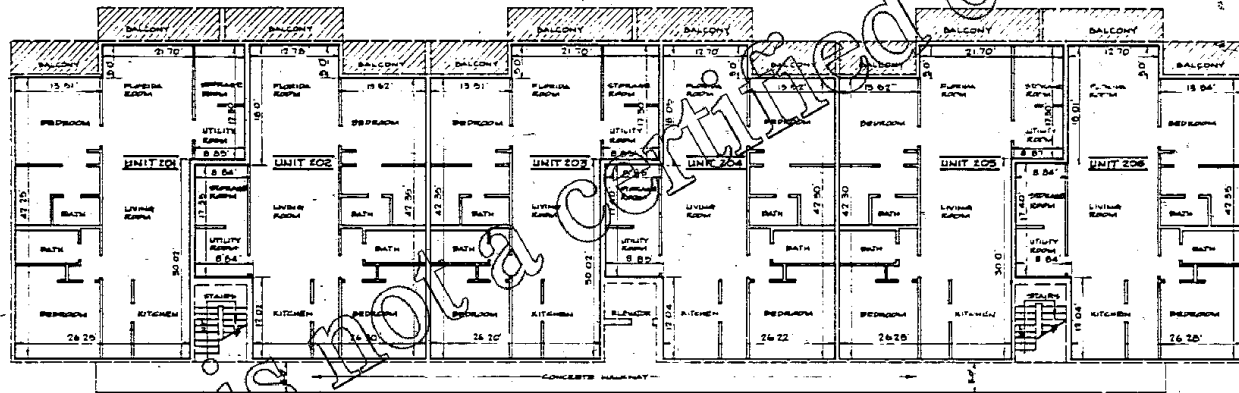
B4677 P0511

CONDOMINIUM 15, OF WHITEHALL AT CAMINO REAL, A CONDOMINIUM

BOCA DEL MAR

EXHIBIT B

TO THE DECLARATION OF CONDOMINIUM



SECOND FLOOR UNIT BOUNDARIES

2ND FLOOR

FINISHED FLOOR ELEVATION= 25.60

FINISHED CEILING ELEVATION= 33.75



- NOTES
1. IMPROVEMENTS SHOWN ARE EXISTING UNLESS OTHERWISE NOTED.
 2. ALL DIMENSIONS SHOWN IN THE CONDOMINIUM UNITS WHERE APPLICABLE ARE TO THE INTERIOR UNPAINTED FINISHED (OR UNFINISHED) SURFACE.
 3. ALL INTERIOR ANGLES IN THE CONDOMINIUM UNITS ARE 90° UNLESS OTHERWISE NOTED.
 4. ELEVATIONS SHOWN HEREON ARE IN FEET AND DECIMAL PARTS THEREOF AND REFER TO N.C.V.D., 1929.
 5. BENCHMARK IS 1'-OUT ON TOP OF CURB AT FRONT OF MAINTENANCE & ELEVATOR CONTROL BUILDING. ELEVATION= 18.78 N.C.V.D., 1929.
 6. SEE SHEET 3 FOR EXTERIOR BUILDING DIMENSIONS.
 7. FINISH FLOOR AND FINISH CEILING ELEVATIONS ARE AS SHOWN.



LEGEND

—	LIMITS OF CONDOMINIUM UNITS
▨	LIMITED COMMON ELEMENT
---	COMMON ELEMENTS

CONDOMINIUM 15	
OF	
WHITEHALL AT CAMINO REAL A CONDOMINIUM	
KENNETH L. SCRAPE, INC. PROFESSIONAL LAND SURVEYORS PALM BEACH GARDENS, FLORIDA, PH. (305)-627-3	
2/20/2005	DATE 8/13/05
OFFICE 984	DATE 8/13/05
2/2/05	DATE 8/21

THIS INSTRUMENT PREPARED BY KENNETH L. SCRAPE, AT THE OFFICE OF KENNETH L. SCRAPE, INC., PROFESSIONAL LAND SURVEYORS, 2700 PGA BOULEVARD, SUITE 103, PALM BEACH GARDENS, FLORIDA 33410

This is not a certified copy.

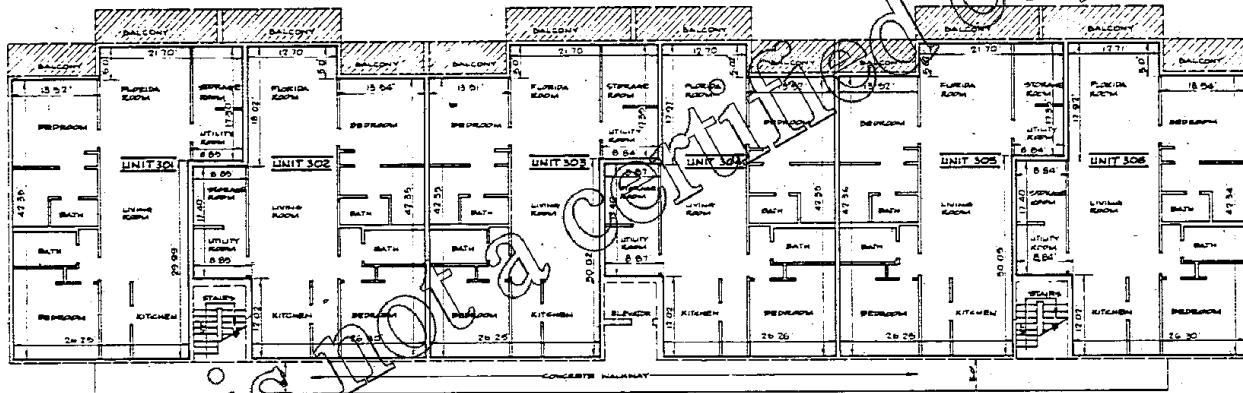
CONDOMINIUM 15, OF WHITEHALL AT CAMINO REAL, A CONDOMINIUM

B4677 P0512

BOCA DEL MAR

EXHIBIT B

TO THE DECLARATION OF CONDOMINIUM



THIRD FLOOR UNIT BOUNDARIES

3RD FLOOR

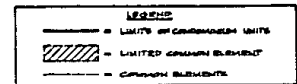
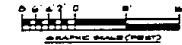
FINISHED FLOOR ELEVATION - 54.25

FINISHED CEILING ELEVATION - 42.35



NOTES

1. IMPROVEMENTS SHOWN ARE EXISTING UNLESS OTHERWISE NOTED.
2. ALL DIMENSIONS SHOWN IN THE CONDOMINIUM UNITS WHERE APPLICABLE ARE TO THE INTERIOR UNPAINTED FINISHED (OR UNFINISHED) SURFACE.
3. ALL INTERIOR ANGLES IN THE CONDOMINIUM UNITS ARE 90° UNLESS OTHERWISE NOTED.
4. ELEVATIONS SHOWN HEREON ARE IN FEET AND DECIMAL PARTS THEREOF AND REFER TO M.C.V.D., 1928.
5. BENCHMARK IS X-CUT ON TOP OF CURB AT FRONT OF MAINTENANCE & ELEVATOR CONTROL BUILDING. ELEVATION - 16.78 M.C.V.D., 1928.
6. SEE SHEET 3 FOR EXTERIOR BUILDING DIMENSIONS.
7. FINISH FLOOR AND FINISH CEILING ELEVATIONS ARE AS SHOWN.



CONDOMINIUM 15	
OF	
WHITEHALL AT CAMINO REAL A CONDOMINIUM	
KENNETH L. SCRAPE, INC. PROFESSIONAL LAND SURVEYORS PALM BEACH GARDENS, FLORIDA, P.O. (305)-627-	
DRAWN: A 2/88	BY: I 02 23
OFFICE: P 88	DATE: 8 FEB 88
BY: K L	REV: 01
SHEET: 5	SHEET: 5

THIS INSTRUMENT PREPARED BY KENNETH L. SCRAPE, AT THE OFFICE OF KENNETH L. SCRAPE, INC., PROFESSIONAL LAND SURVEYORS, 2700 PGA BOULEVARD, SUITE 103, PALM BEACH GARDENS, FLORIDA 33410

This is not a certified copy

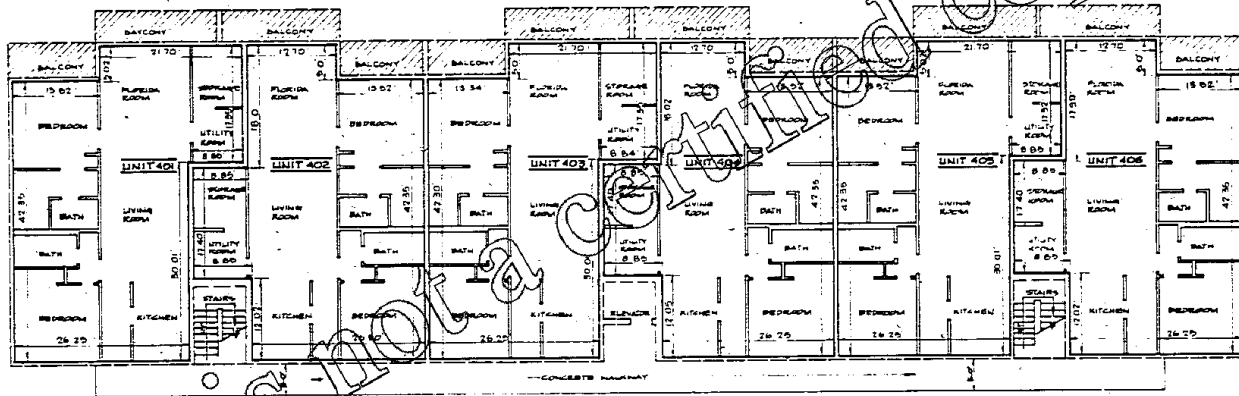
B4677 P0513

CONDOMINIUM 15, OF WHITEHALL AT CAMINO REAL, A CONDOMINIUM

BOCA DEL MAR

EXHIBIT B

TO THE DECLARATION OF CONDOMINIUM



FOURTH FLOOR UNIT BOUNDARIES

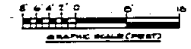
4TH FLOOR

FINISHED FLOOR ELEVATION: 42.85

FINISHED CEILING ELEVATION: 50.95



- NOTES**
1. IMPROVEMENTS SHOWN ARE EXISTING UNLESS OTHERWISE NOTED.
 2. ALL DIMENSIONS SHOWN IN THE CONDOMINIUM UNITS WHERE APPLICABLE ARE TO THE INTERIOR UNPAINTED FINISHED (OR UNFINISHED) SURFACE.
 3. ALL INTERIOR ANGLES IN THE CONDOMINIUM UNITS ARE 90° UNLESS OTHERWISE NOTED.
 4. ELEVATIONS SHOWN HEREIN ARE IN FEET AND DECIMAL PARTS THEREOF AND REFER TO N.G.V.D. 1929.
 5. BENCHMARK IS X-CUT ON TOP OF CURB AT FRONT OF MAINTENANCE & ELEVATOR CONTROL BUILDING. ELEVATION: 14.78 N.G.V.D., 1929.
 6. SEE SHEET 3 FOR EXTERIOR BUILDING DIMENSIONS.
 7. FINISH FLOOR AND FINISH CEILING ELEVATIONS ARE AS SHOWN.



LEGEND

- LIMITS OF CONDOMINIUM UNITS
- ▨ LIMITED COMMON ELEMENT
- COMMON ELEMENTS

CONDOMINIUM 15	
OF	
WHITEHALL AT CAMINO REAL, A CONDOMINIUM	
KENNETH L. SCRAPE, INC.	
PROFESSIONAL LAND SURVEYORS	
PALM BEACH GARDENS, FLORIDA, PH. (305) 627-1131	
PROJECT NO. 15-01	DATE 07/23/85
SHEET NO. 2	TOTAL SHEETS 2

THIS INSTRUMENT PREPARED BY KENNETH L. SCRAPE, AT THE OFFICE OF KENNETH L. SCRAPE, INC., PROFESSIONAL LAND SURVEYORS, 2700 PGA BOULEVARD, SUITE 103, PALM BEACH GARDENS, FLORIDA 33410

This is not a certified copy