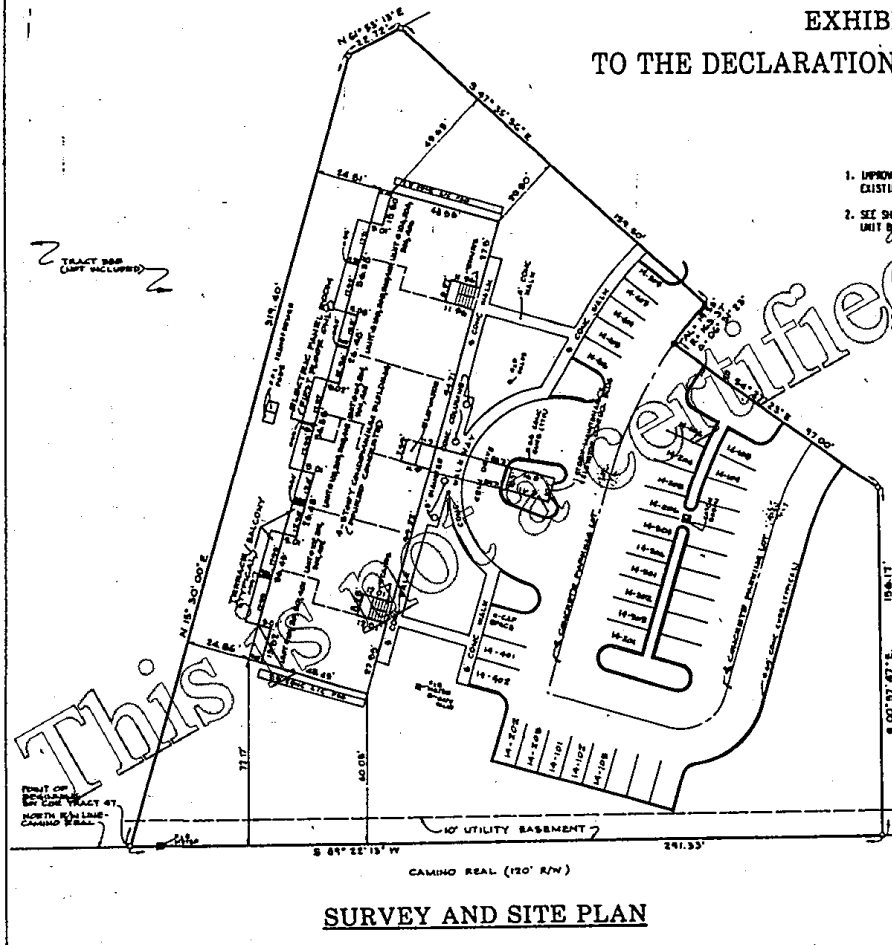


CONDOMINIUM 14, OF WHITEHALL AT CAMINO REAL, A CONDOMINIUM

BOCA DEL MAR

EXHIBIT B

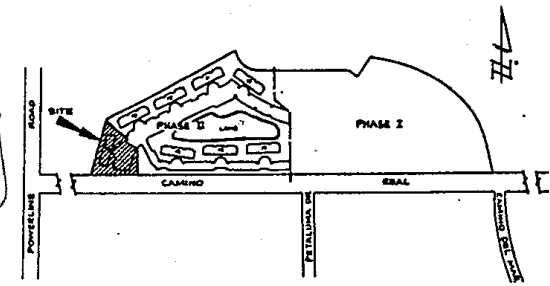
TO THE DECLARATION OF CONDOMINIUM



SURVEY AND SITE PLAN

- NOTES**
1. IMPROVEMENTS SHOWN HEREIN ARE EXISTING UNLESS OTHERWISE NOTED.
 2. SEE SHEETS A THROUGH F FOR DETAILS OF UNIT BOUNDARIES.

- LEGEND**
- 1/4" IRON ROD W/ N.E. & CAP
 - 1/4" IRON CHILL WOOD



VICINITY SKETCH

DESCRIPTION OF CONDO. NO. 14

A CERTAIN PARCEL OF LAND LYING IN SECTION 27, TOWNSHIP 42 SOUTH, RANGE 42 EAST, PALM BEACH COUNTY, FLORIDA, BEING MORE PARTICULARLY DESCRIBED AS FOLLOWS:

BEGINNING AT THE SOUTHWEST CORNER OF THAT CERTAIN PARCEL OF LAND KNOWN AS TRACT 47, AS SAME IS SHOWN ON THE PLAT OF BOCA DEL MAR NO. 31, RECORDED IN PLAT BOOK 30, PAGES 82 THROUGH 84, INCLUDING PUBLIC RECORDS OF PALM BEACH COUNTY, FLORIDA, THENCE FROM SAID POINT OF BEGINNING (MEASUREMENTS MENTIONED HEREIN ARE IN THE MERIDIAN OF SAID TRACT 47 OF BOCA DEL MAR NO. 31) RUN BY THE FOLLOWING BEARING COURSES:

1. NORTH 15°30'00" EAST, 319.40 FEET; THENCE...
2. NORTH 61°33'13" EAST, 22.72 FEET; THENCE...
3. SOUTH 47°35'54" EAST, 159.50 FEET; THENCE...
4. SOUTHWEST ALONG THE ARC OF A 143.77 FOOT RADIUS CURVE, CONCAVE SOUTHEAST, (WHOSE LONG CHORD BEARS SOUTH 30°58'23" WEST) AN ARC DISTANCE OF 19.55 FEET; THENCE...
5. SOUTH 54°21'23" EAST, A DISTANCE OF 97.00 FEET; THENCE...
6. SOUTH 00°37'42" EAST, A DISTANCE OF 136.17 FEET; THENCE...
7. SOUTH 09°22'13" WEST, A DISTANCE OF 291.33 FEET, MORE OR LESS, TO THE POINT OF BEGINNING.

CONTAINING 1.40 ACRES, MORE OR LESS.

THIS INSTRUMENT PREPARED BY KENNETH L. SCRAPE, AT THE OFFICE OF KENNETH L. SCRAPE, 1140-N PROFESSIONAL LAND SURVEYORS, 2700 PGA BOULEVARD, SUITE 103, PALM BEACH GARDENS, FLORIDA 33410

SURVEYOR'S NOTES

1. THIS SURVEY PREPARED FOR BOOK 4 IN PLAT BOOK 1700 AND 23 NOT RECORDED.
2. AN EXAMINATION OF THE PUBLIC RECORDS HAS BEEN MADE BY THIS OFFICE.
3. FEASIBLE IMPROVEMENTS ARE AS SHOWN.
4. DESCRIPTION PREPARED BY SURVEYOR.

SURVEYOR'S CERTIFICATION

I, KENNETH L. SCRAPE, being an duly sworn and qualified Professional Land Surveyor in the State of Florida, do hereby certify that the foregoing is a true and correct copy of the original survey as shown to me by the owner of the land described herein, and that the same is in accordance with the laws of the State of Florida.

DATE OF SURVEY 5/14/94

KENNETH L. SCRAPE, JPA
PROFESSIONAL LAND SURVEYOR
PALM BEACH GARDENS, FLORIDA, P.O. 13031-427

CONDOMINIUM 14	
OF	
WHITEHALL AT CAMINO REAL A CONDOMINIUM	
KENNETH L. SCRAPE, JPA PROFESSIONAL LAND SURVEYOR PALM BEACH GARDENS, FLORIDA, P.O. 13031-427	
FILED & RECORDED	1 10 23
OFFICE	0/10/94
BY	10/23/94

This is a Certified copy

This is a Certified copy

B4961 0534

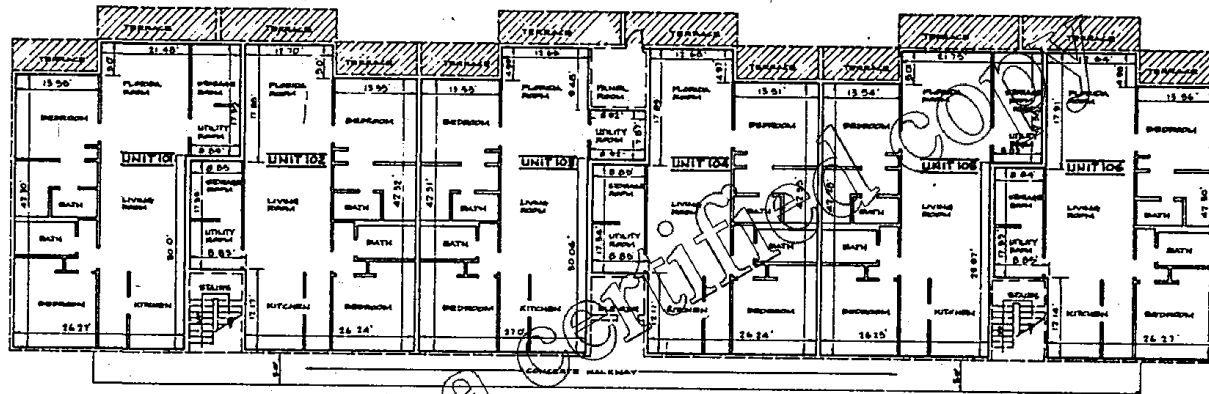
B4661 P0535

CONDOMINIUM 14 , OF WHITEHALL AT CAMINO REAL, A CONDOMINIUM

BOCA DEL MAR

EXHIBIT A

TO THE DECLARATION OF CONDOMINIUM



FIRST FLOOR UNIT BOUNDARIES

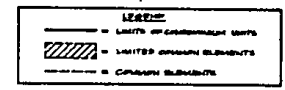
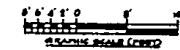
1ST FLOOR

FINISHED FLOOR ELEVATION- 17.00

FINISHED CEILING ELEVATION- 29.18



- NOTES**
1. IMPROVEMENTS SHOWN ARE EXISTING UNLESS OTHERWISE NOTED.
 2. ALL DIMENSIONS SHOWN IN THE CONDOMINIUM UNITS WHERE APPLICABLE ARE TO THE INTERIOR UNPAINTED FINISHED (OR UNFINISHED) SURFACE.
 3. ALL EXTERIOR ANGLES IN THE CONDOMINIUM UNITS ARE 90° UNLESS OTHERWISE NOTED.
 4. ELEVATIONS SHOWN HEREIN ARE IN FEET AND DECIMAL PARTS THEREOF AND REFER TO N.G.V.D., 1929.
 5. BENCHMARK IS TOP OF CATCH BASIN IN PARKING LOT AS SHOWN ON SHEET 3. ELEVATION- 14.34, N.G.V.D., 1929.
 6. SEE SHEET 3 FOR EXTERIOR BUILDING DIMENSIONS.
 7. FINISH FLOOR AND FINISH CEILING ELEVATIONS ARE AS SHOWN.



This is not a certified copy

CONDOMINIUM 14	
OF	
WHITEHALL AT CAMINO REAL, A CONDOMINIUM	
KENNETH L. SCRAPE, INC. PROFESSIONAL LAND SURVEYORS	
PALM BEACH GARDENS FLORIDA, PH. (305) 627-3401	
FILED AT BUREAU OF	DATE OF RECORDING
OFFICE	BY
DATE	TIME

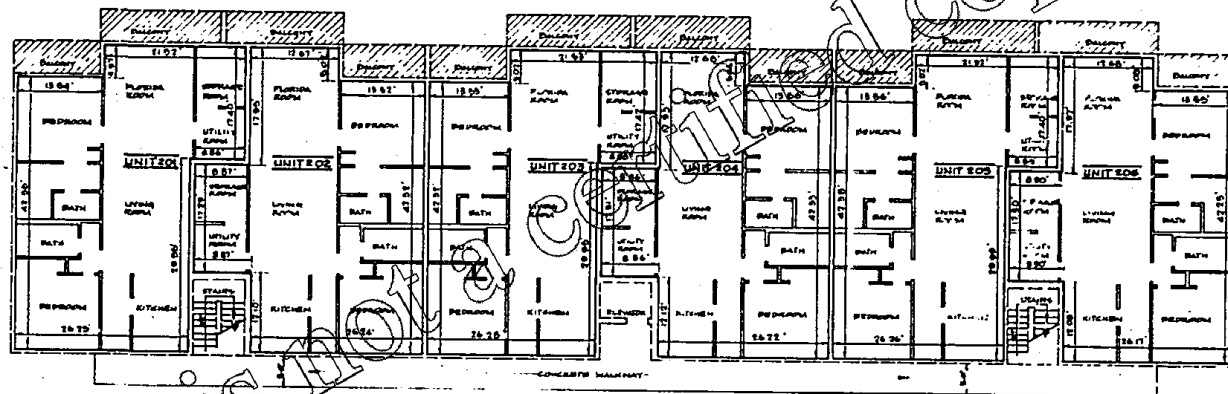
THIS INSTRUMENT PREPARED BY KENNETH L. SCRAPE, AT THE OFFICE OF KENNETH L. SCRAPE, INC., PROFESSIONAL LAND SURVEYORS, 2700 PGA BOULEVARD, SUITE 103, PALM BEACH GARDENS, FLORIDA 33410

CONDOMINIUM 14, OF WHITEHALL AT CAMINO REAL, A CONDOMINIUM

BOCA DEL MAR

EXHIBIT B

TO THE DECLARATION OF CONDOMINIUM



SECOND FLOOR UNIT BOUNDARIES

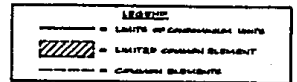
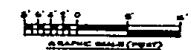
2ND FLOOR

FINISHED FLOOR ELEVATION: 26.60

FINISHED CEILING ELEVATION: 85.71



- NOTES**
1. IMPROVEMENTS SHOWN ARE EXISTING UNLESS OTHERWISE NOTED.
 2. ALL DIMENSIONS SHOWN IN THE CONDOMINIUM UNITS WHERE APPLICABLE ARE TO THE INTERIOR UNPAINTED FINISHED (OR UNFINISHED) SURFACE.
 3. ALL INTERIOR ANGLES IN THE CONDOMINIUM UNITS ARE 90° UNLESS OTHERWISE NOTED.
 4. ELEVATIONS SHOWN HEREON ARE IN FEET AND DECIMAL PARTS THEREOF AND REFER TO M.S.V.D. 1929.
 5. BENCHMARK IS TOP OF CATCH BASIN IN PARKING LOT AS SHOWN ON SHEET 3. ELEVATION: 14.36, M.S.V.D., 1929.
 6. SEE SHEET 3 FOR EXTERIOR BUILDING DIMENSIONS.
 7. FINISH FLOOR AND FINISH CEILING ELEVATIONS ARE AS SHOWN.



CONDOMINIUM 14	
OF	
WHITEHALL AT CAMINO REAL A CONDOMINIUM	
KENNETH L. SCRAPE, INC. PROFESSIONAL LAND SURVEYORS	
PALM BEACH GARDENS FLORIDA, PH. (305) 627-340	

THIS INSTRUMENT PREPARED BY KENNETH L. SCRAPE, AT THE OFFICE OF KENNETH L. SCRAPE, INC., PROFESSIONAL LAND SURVEYORS, 2700 PGA BOULEVARD, SUITE 103, PALM BEACH GARDENS, FLORIDA 33410

DATE OF RECORDING	12/28/2010	BOOK	2010-00000
DATE OF RECORDING	01/07/2011	BOOK	2011-00000
DATE OF RECORDING	01/07/2011	BOOK	2011-00000

This is not a certified copy

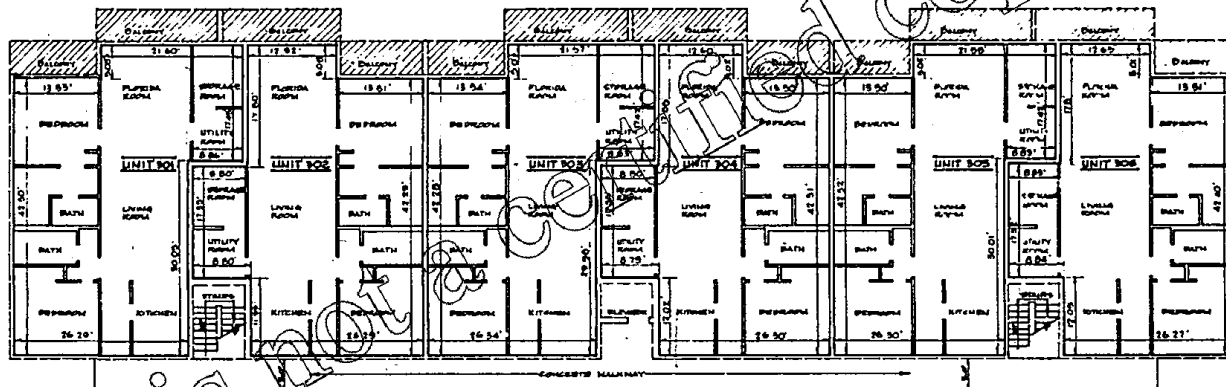
B4661 P0537

CONDOMINIUM 14, OF WHITEHALL AT CAMINO REAL, A CONDOMINIUM

BOCA DEL MAR

EXHIBIT B

TO THE DECLARATION OF CONDOMINIUM



THIRD FLOOR UNIT BOUNDARIES

NO. 14

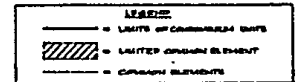
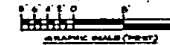
FINISHED FLOOR ELEVATION- 54.25

FINISHED CEILING ELEVATION- 42.40



NOTES

1. IMPROVEMENTS SHOWN ARE EXISTING UNLESS OTHERWISE NOTED.
2. ALL DIMENSIONS SHOWN IN THE CONDOMINIUM UNLESS OTHERWISE NOTED ARE TO THE INTERIOR UNFINISHED (OR UNFINISHED) SURFACE.
3. ALL INTERIOR ANGLES IN THE CONDOMINIUM UNLESS OTHERWISE NOTED ARE 90° UNLESS OTHERWISE NOTED.
4. ELEVATIONS SHOWN HEREIN ARE IN FEET AND DECIMAL PARTS THEREOF AND REFER TO N.G.V.D. 1929.
5. BENCHMARK IS TOP OF CATCH BASIN IN PARKING AS SHOWN ON SHEET 3. ELEVATION- 14 N.G.V.D., 1929.
6. SEE SHEET 3 FOR EXTERIOR BUILDING DIMENSIONS.
7. FINISH FLOOR AND FINISH CEILING ELEVATIONS AS SHOWN.



CONDOMINIUM 14
OF

WHITEHALL AT CAMINO
A CONDOMINIUM

KENNETH L. SCARPE
PROFESSIONAL LAND SURVEYOR
PALM BEACH GARDENS, FLORIDA, P.L. (305)

THIS INSTRUMENT PREPARED BY KENNETH L. SCARPE, AT THE OFFICE
OF KENNETH L. SCARPE, INC., PROFESSIONAL LAND SURVEYORS, 2700
PSA BOULEVARD, SUITE 103, PALM BEACH GARDENS, FLORIDA 33418

DATE	03/03	DATE	03/03
BY	KL	BY	KL

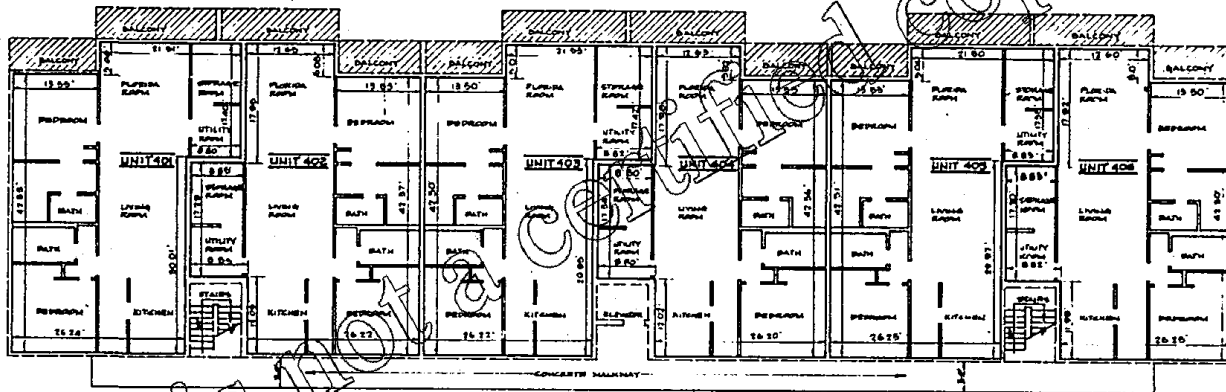
CONDOMINIUM 14, OF WHITEHALL AT CAMINO REAL, A CONDOMINIUM

B4661 P0538

BOCA DEL MAR

EXHIBIT B

TO THE DECLARATION OF CONDOMINIUM



FOURTH FLOOR UNIT BOUNDARIES

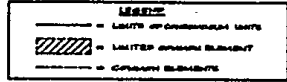
4TH FLOOR

FINISHED FLOOR ELEVATION: 42.87

FINISHED CEILING ELEVATION: 91.01



- NOTES**
1. IMPROVEMENTS SHOWN ARE EXISTING UNLESS OTHERWISE NOTED.
 2. ALL DIMENSIONS SHOWN IN THE CONDOMINIUM UNITS WHERE APPLICABLE ARE TO THE INTERIOR UNPAINTED FINISHED (OR UNFINISHED) SURFACE.
 3. ALL INTERIOR ANGLES IN THE CONDOMINIUM UNITS ARE 90° UNLESS OTHERWISE NOTED.
 4. ELEVATIONS SHOWN HEREON ARE IN FEET AND DECIMAL PARTS THEREOF AND REFER TO N.G.V.D. 1929.
 5. BENCHMARK IS TOP OF CATCH BASIN IN PARKING LOT AS SHOWN ON SHEET 3. ELEVATION- 14.36 N.G.V.D., 1929.
 6. SEE SHEET 3 FOR EXTERIOR BUILDING DIMENSIONS.
 7. FINISH FLOOR AND FINISH CEILING ELEVATIONS ARE AS SHOWN.



CONDOMINIUM 14			
OF			
WHITEHALL AT CAMINO REAL			
A CONDOMINIUM			
KENNETH L. SCRAPE, JIM			
PROFESSIONAL LAND SURVEYORS			
PALM BEACH GARDENS FLORIDA, INC. (1921-611)			
FILE #	DATE	JOB NO.	JOB NO.
17182 J 18308	8/18/88	14	14
OFFICE	DATE	JOB NO.	JOB NO.
17182 J 18308	8/18/88	14	14

THIS INSTRUMENT PREPARED BY KENNETH L. SCRAPE, AT THE OFFICE OF KENNETH L. SCRAPE, INC., PROFESSIONAL LAND SURVEYORS, 2700 PGA BOULEVARD, SUITE 103, PALM BEACH GARDENS, FLORIDA 33410

This is not a certified copy