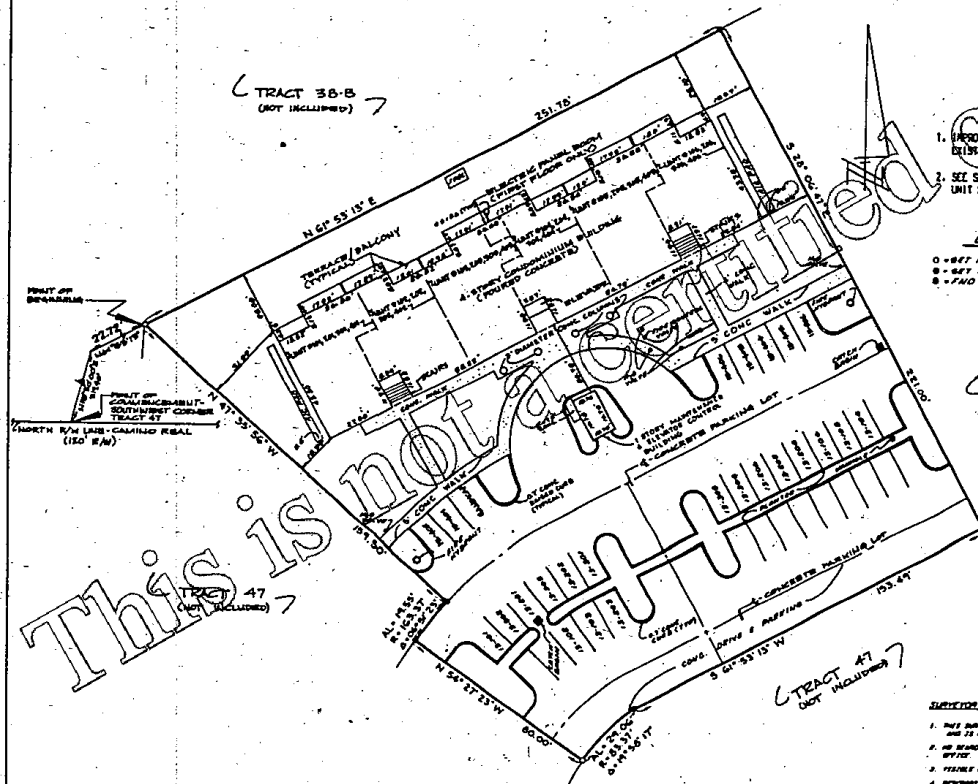


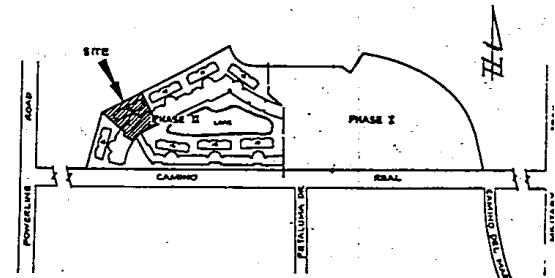
84653 P1294

CONDOMINIUM 13, OF WHITEHALL AT CAMINO REAL, A CONDOMINIUM

BOCA DEL MAR EXHIBIT B TO THE DECLARATION OF CONDOMINIUM



SURVEY AND SITE PLAN



VICINITY SKETCH

- NOTES
1. IMPROVEMENTS SHOWN HEREON ARE BELIEVED UNLESS OTHERWISE NOTED.
 2. SEE SHEETS 4 THROUGH 7 FOR DETAILS OF UNIT BOUNDARIES.

- LEGEND
- - SET FROM ROD NIELS CAP
 - - SET DRILL HOLE IN CONCRETE
 - - TAD FROM ROD NIELS CAP

DESCRIPTION OF CTRD NO. 13

A CERTAIN PARCEL OF LAND LYING IN SECTION 27, TOWNSHIP 47 SOUTH, RANGE 42 EAST, PALM BEACH COUNTY, FLORIDA, BEING MORE PARTICULARLY DESCRIBED AS FOLLOWS:

COMMENCING AT THE SOUTHWEST CORNER OF THAT CERTAIN PARCEL OF LAND KNOWN AS TRACT 47, AS SAME IS SHOWN ON THE PLAT OF BOCA DEL MAR NO. 3, RECORDED IN PLAT BOOK 30, PAGES 82 THROUGH 84, INCLUSIVE, PUBLIC RECORDS OF PALM BEACH COUNTY, FLORIDA, THENCE NORTH 15° 30' 00" EAST BEARING PORTIONED HEREIN ARE IN THE MERIDIAN OF SAID TRACT 47 OF BOCA DEL MAR NO. 3; A DISTANCE OF 319.49 FEET; THENCE NORTH 61° 53' 13" EAST, A DISTANCE OF 281.78 FEET TO THE POINT OF BEGINNING; THENCE ALONG THE FOLLOWING NUMBERED COURSES:

1. NORTH 61° 53' 13" EAST, 281.78 FEET; THENCE...
2. SOUTH 28° 06' 47" EAST, 221.00 FEET; THENCE...
3. SOUTH 61° 53' 13" WEST, 123.49 FEET; THENCE...
4. SOUTHWEST ALONG THE ARC OF AN 83.37 FOOT RADIUS CURVE, CONCAVE SOUTHWEST, WHOSE LONG CHORD BEARS SOUTH 44° 27' 38" WEST, AN ARC LENGTH OF 28.06 FEET; THENCE...
5. NORTH 54° 27' 23" WEST, A DISTANCE OF 38.00 FEET; THENCE...
6. NORTHEAST ALONG THE ARC OF A 143.37 FOOT RADIUS CURVE, CONCAVE SOUTHWEST, WHOSE LONG CHORD BEARS NORTH 38° 58' 20" EAST, AN ARC LENGTH OF 19.35 FEET; THENCE...
7. NORTH 47° 35' 56" WEST, 159.50 FEET, MORE OR LESS, TO THE POINT OF BEGINNING.

CONTAINING 1.107 ACRES, MORE OR LESS.

THIS INSTRUMENT PREPARED BY KENNETH L. SCRAPER, AT THE OFFICE OF KENNETH L. SCRAPER, INC., PROFESSIONAL LAND SURVEYORS, 2700 PGA BOULEVARD, SUITE 103, PALM BEACH GARDENS, FLORIDA 33410

SURVEYOR'S NOTES

1. THIS SURVEY WAS MADE FOR OWNER & IN ACCORDANCE WITH THE PROVISIONS OF CHAPTER 22, STATUTES AT LARGE OF THE STATE OF FLORIDA.
2. ALL RECORDS OF THE PUBLIC RECORDS HAVE BEEN MADE BY THIS OFFICE.
3. THERE IS NO INTERFERENCE WITH ANY OTHER SURVEY.
4. DESCRIPTION FURNISHED BY CLIENT.

SURVEYOR'S CERTIFICATION

I HEREBY CERTIFY THAT I AM A LICENSED PROFESSIONAL LAND SURVEYOR IN THE STATE OF FLORIDA AND THAT I HAVE PERSONALLY AND INDEPENDENTLY CONDUCTED THIS SURVEY AND THAT I AM NOT PROVIDING ANY SERVICES AS A REAL ESTATE BROKER OR REALTOR. I HAVE NOT BEEN CONVICTED OF ANY CRIMINAL OFFENSES THAT WOULD DISQUALIFY ME FROM EXERCISING MY PROFESSIONAL RIGHTS AND PRIVILEGES. I HAVE NOT BEEN DEBARRED FROM EXERCISING MY PROFESSIONAL RIGHTS AND PRIVILEGES.

CONDOMINIUM 13	
BY	
WHITEHALL AT CAMINO REAL A CONDOMINIUM	
KENNETH L. SCRAPER, INC.	
PROFESSIONAL LAND SURVEYORS	
PALM BEACH GARDENS, FL. 33410	
DATE OF THIS INSTRUMENT	NOV 11 2010
DATE OF PREVIOUS INSTRUMENT	
DATE OF PREVIOUS INSTRUMENT	
DATE OF PREVIOUS INSTRUMENT	

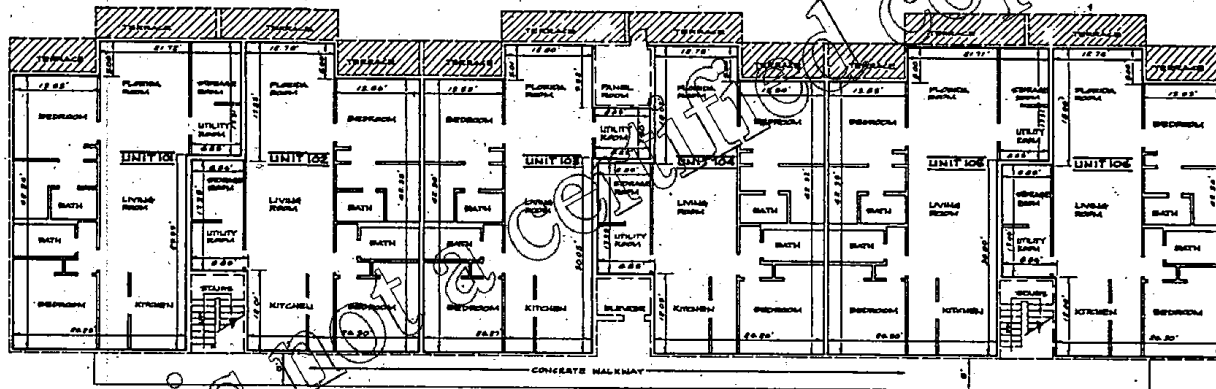
B4653 P1295

CONDOMINIUM 13, OF WHITEHALL AT CAMINO REAL, A CONDOMINIUM

BOCA DEL MAR

EXHIBIT B

TO THE DECLARATION OF CONDOMINIUM



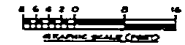
FIRST FLOOR UNIT BOUNDARIES

1ST FLOOR

FINISHED FLOOR ELEVATION: 1700

FINISHED CEILING ELEVATION: 2210

- NOTES**
1. IMPROVEMENTS SHOWN ARE EXISTING UNLESS OTHERWISE NOTED.
 2. ALL DIMENSIONS SHOWN IN THE CONDOMINIUM UNITS WHERE APPLICABLE ARE TO THE INTERIOR UNPAINTED FINISHED (OR UNFINISHED) SURFACE.
 3. ALL EXTERIOR ANGLES IN THE CONDOMINIUM UNITS ARE 90° UNLESS OTHERWISE NOTED.
 4. ELEVATIONS SHOWN HEREIN ARE IN FEET AND DECIMAL PARTS THEREOF AND REFER TO M.S.V.D. 1929.
 5. BENCHMARK IS 1-OUT ON TOP OF CURB AT FRONT OF MAINTENANCE & ELEVATOR CONTROL BUILDING. ELEVATION: 22.72 M.S.V.D., 1929.
 6. SEE SHEET 3 FOR EXTERIOR BUILDING DIMENSIONS.
 7. FINISH FLOOR AND FINISH CEILING ELEVATIONS ARE AS SHOWN.



LEGEND

- LIMITS OF CONDOMINIUM UNITS
- LIMITED COMMON ELEMENTS
- COMMON ELEMENTS

CONDOMINIUM 13
OF
WHITEHALL AT CAMINO REAL
A CONDOMINIUM

KENNETH L. SCRAPE, INC.
PROFESSIONAL LAND SURVEYORS
PALM BEACH GARDENS, FL. 33410-6277-06

FIELD DATE	11-1-89	BY	KLSC
OFFICE P.L.C.	DATE 9-11-89	BY	KLSC
DATE 8-8-89	BY	KLSC	13

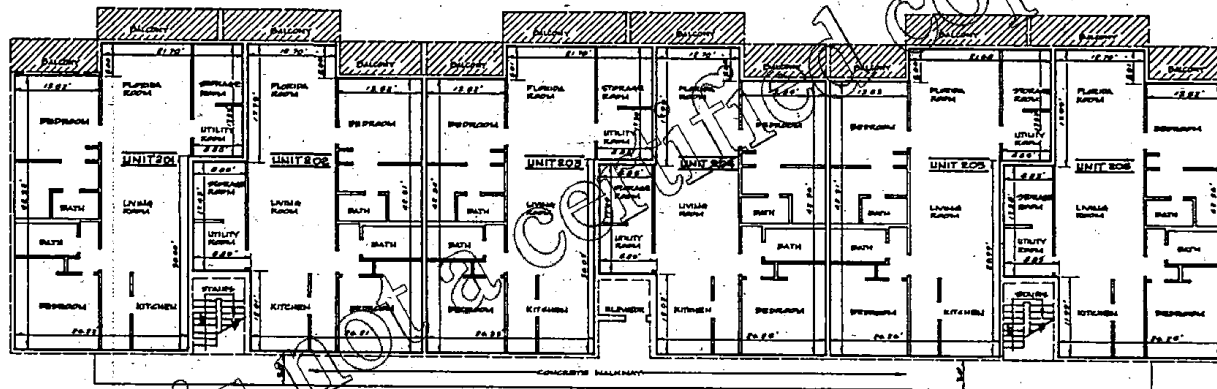
THIS INSTRUMENT PREPARED BY KENNETH L. SCRAPE, AT THE OFFICE OF KENNETH L. SCRAPE, INC., PROFESSIONAL LAND SURVEYORS, 2700 PGA BOULEVARD, SUITE 103, PALM BEACH GARDENS, FLORIDA 33410

This is not a certified copy

CONDOMINIUM 13 , OF WHITEHALL AT CAMINO REAL, A CONDOMINIUM

B4653 P1296

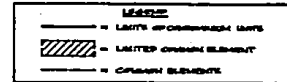
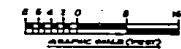
BOCA DEL MAR
EXHIBIT B
TO THE DECLARATION OF CONDOMINIUM



SECOND FLOOR UNIT BOUNDARIES

2ND FLOOR
FINISHED FLOOR ELEVATION- 20.00
FINISHED CEILING ELEVATION- 22.70

- NOTES**
1. IMPROVEMENTS SHOWN ARE EXISTING UNLESS OTHERWISE NOTED.
 2. ALL DIMENSIONS SHOWN IN THE CONDOMINIUM UNITS WHERE APPLICABLE ARE TO THE EXTERIOR UNFINISHED (OR UNFINISHED) SURFACE.
 3. ALL INTERIOR ANGLES IN THE CONDOMINIUM UNITS ARE 90° UNLESS OTHERWISE NOTED.
 4. ELEVATIONS SHOWN HEREIN ARE IN FEET AND DECIMAL PARTS THEREOF AND REFER TO M.S.V.D., 1929.
 5. BENCHMARK IS 3'-OUT ON TOP OF CURB AT FRONT OF MAINTENANCE & ELEVATOR CONTROL BUILDING. ELEVATION- 25.77 M.S.V.D., 1929.
 6. SEE SHEET J FOR EXTERIOR BUILDING DIMENSIONS.
 7. FINISH FLOOR AND FINISH CEILING ELEVATIONS ARE AS SHOWN.



CONDOMINIUM 13			
OF			
WHITEHALL AT CAMINO REAL A CONDOMINIUM			
KENNETH L. SCRAPE, INC.			
PROFESSIONAL LAND SURVEYORS			
PALM BEACH GARDENS, FL., INC. DISTRICT OFFICE			
FIELD SHEET	NO. 1	BOOK NO.	AP # 80080
DATE PREPARED	APR 11, 2008	DATE OF SURVEY	APR 11, 2008
DRAWN BY	KL	CHECKED BY	KL

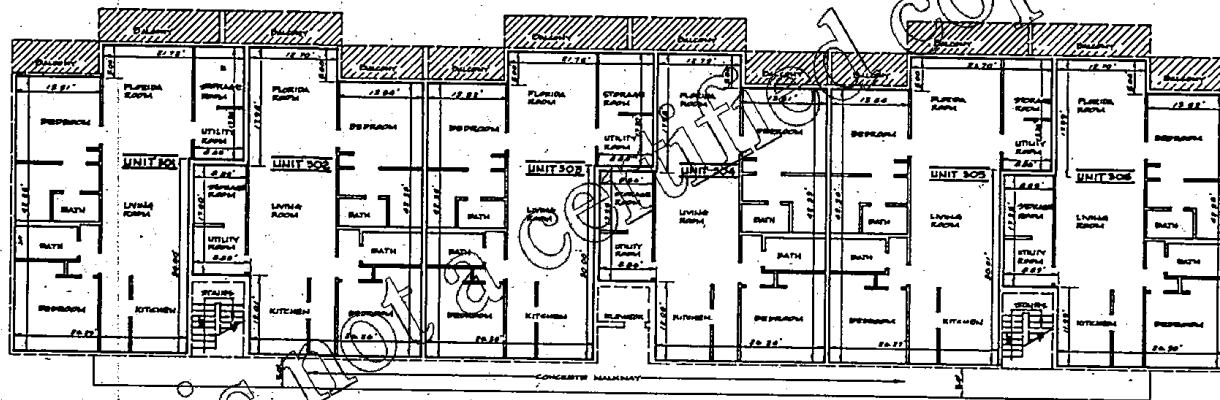
THIS DISTRICT PREPARED BY KENNETH L. SCRAPE, AT THE OFFICE OF KENNETH L. SCRAPE, INC., PROFESSIONAL LAND SURVEYORS, 2700 PGA BOULEVARD, SUITE 102, PALM BEACH GARDENS, FLORIDA 33410

This is not a certified copy

CONDOMINIUM 13, OF WHITEHALL AT CAMINO REAL, A CONDOMINIUM

B4653 P1297

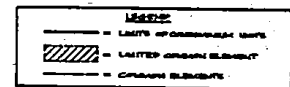
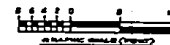
BOCA DEL MAR EXHIBIT B TO THE DECLARATION OF CONDOMINIUM



THIRD FLOOR UNIT BOUNDARIES

3RD FLOOR
FINISHED FLOOR ELEVATION: 54.00
FINISHED CEILING ELEVATION: 49.00

- NOTES**
1. IMPROVEMENTS SHOWN ARE EXISTING UNLESS OTHERWISE NOTED.
 2. ALL DIMENSIONS SHOWN IN THE CONDOMINIUM UNITS WHERE APPLICABLE ARE TO THE INTERIOR UNFINISHED (OR UNFINISHED) SURFACE.
 3. ALL INTERIOR ANGLES IN THE CONDOMINIUM UNITS ARE 90° UNLESS OTHERWISE NOTED.
 4. ELEVATIONS SHOWN HEREON ARE IN FEET AND DECIMAL PARTS THEREOF AND REFER TO M.C.V.D. 1929.
 5. BENCHMARK IS 2'-00" ON TOP OF CURB AT FRONT OF MAINTENANCE & ELEVATOR CONTROL BUILDING. ELEVATION: 46.72 M.C.V.D., 1929.
 6. SEE SHEET 3 FOR EXTERIOR BUILDING DIMENSIONS.
 7. FINISH FLOOR AND FINISH CEILING ELEVATIONS ARE AS SHOWN.



CONDOMINIUM 13			
OF			
WHITEHALL AT CAMINO REAL, A CONDOMINIUM			
KENNETH L. SCRAPE, INC.			
PROFESSIONAL LAND SURVEYORS			
PALM BEACH GARDENS, FL., INC. 0000177-0001			
FIELD FILE	SP. 1	AC. 8.8	AP. NO. 2700-003
OFFICE FILE	DATE 8-11-88	SCALE 1/8" = 1'-0"	DATE 10-10-88
BY K.L.S.	DATE 8-11-88	SCALE 1/8" = 1'-0"	DATE 10-10-88

THIS INSTRUMENT PREPARED BY KENNETH L. SCRAPE, AT THE OFFICE OF KENNETH L. SCRAPE, INC., PROFESSIONAL LAND SURVEYORS, 2700 PGA BOULEVARD, SUITE 103, PALM BEACH GARDENS, FLORIDA 33410

This is not a certified copy

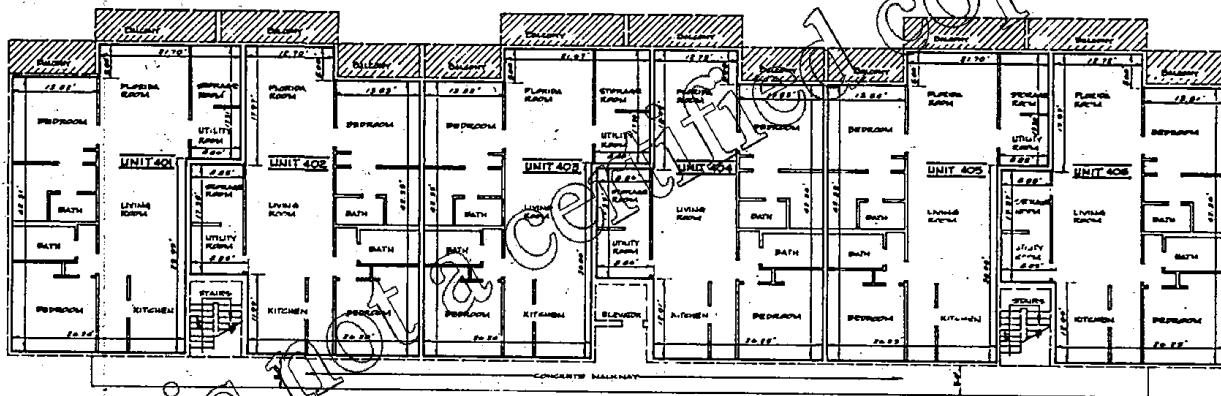
CONDOMINIUM 13 , OF WHITEHALL AT CAMINO REAL, A CONDOMINIUM

B4653 P1298

BOCA DEL MAR

EXHIBIT B

TO THE DECLARATION OF CONDOMINIUM



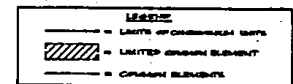
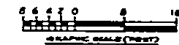
FOURTH FLOOR UNIT BOUNDARIES

4TH FLOOR

FINISHED FLOOR ELEVATION- 02.00

FINISHED CEILING ELEVATION- 00.00

- NOTES**
1. DIMENSIONS SHOWN ARE CEILING UNLESS OTHERWISE NOTED.
 2. ALL DIMENSIONS SHOWN IN THE CONDOMINIUM UNITS WHERE APPLICABLE ARE TO THE INTERIOR UNPAINTED FINISHED (OR UNFINISHED) SURFACE.
 3. ALL INTERIOR ANGLES IN THE CONDOMINIUM UNITS ARE 90° UNLESS OTHERWISE NOTED.
 4. ELEVATIONS SHOWN HEREIN ARE IN FEET AND DECIMAL PARTS THEREOF AND REFER TO M.S.T.D. 1925.
 5. BENCHMARK IS X-CUT ON TOP OF CURB AT FRONT OF MAINTENANCE & ELEVATOR CONTROL BUILDING. ELEVATION- 46.79 M.S.T.D. 1925.
 6. SEE SHEET 3 FOR EXTERIOR BUILDING DIMENSIONS.
 7. FINISH FLOOR AND FINISH CEILING ELEVATIONS ARE AS SHOWN.



CONDOMINIUM 13

OF
WHITEHALL AT CAMINO REAL
A CONDOMINIUM

KENNETH L. SCRAPE, INC.
PROFESSIONAL LAND SURVEYORS

PALM BEACH GARDENS, FL. INC. DIST. 677-348

PLAN 2215 OF 1 BC 85 JOB #83021

DATE: 04-11-85 TIME: 10:00 AM

BY: KS DATE: 04-11-85

THIS INSTRUMENT PREPARED BY KENNETH L. SCRAPE, AT THE OFFICE OF KENNETH L. SCRAPE, INC., PROFESSIONAL LAND SURVEYORS, 2700 PMA BLDG., SUITE 101, PALM BEACH GARDENS, FLORIDA 33418

This is not a certified copy