

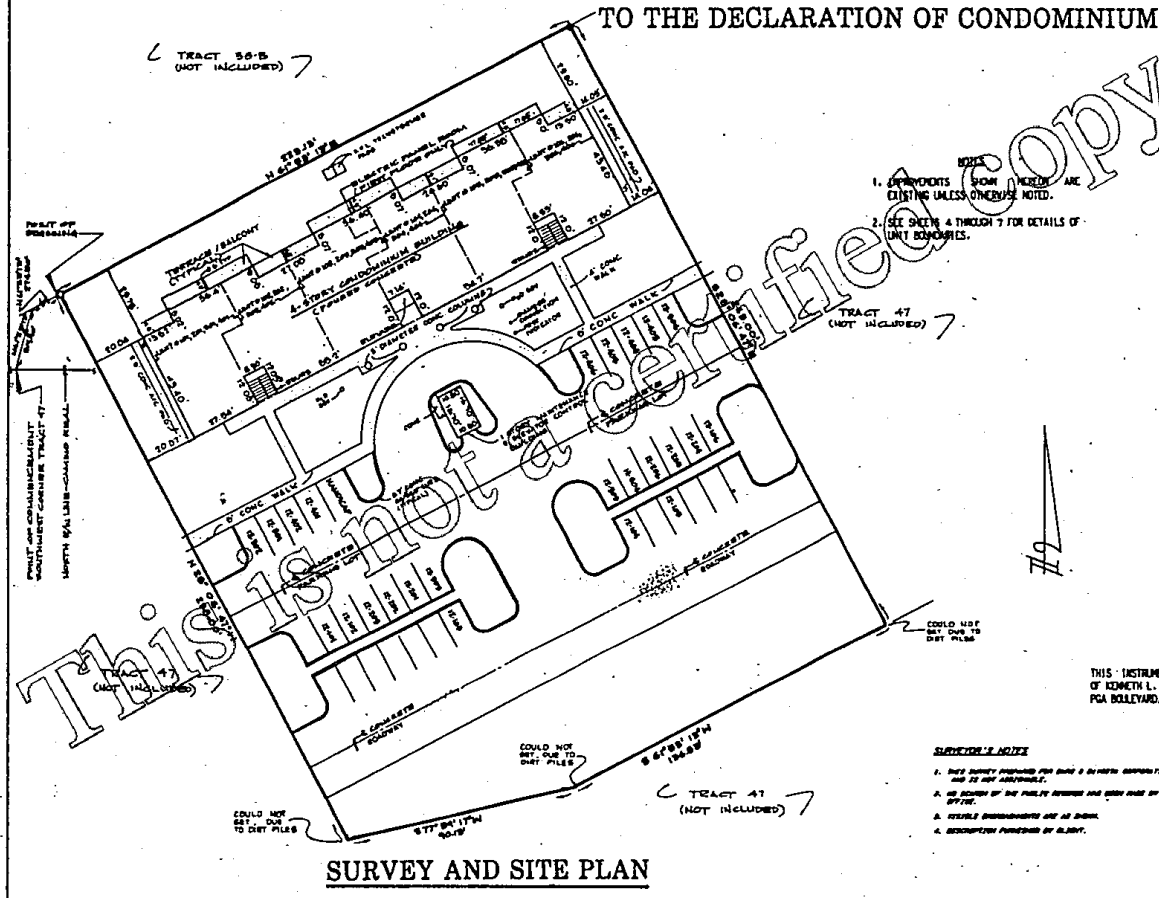
B4651 P0406

CONDOMINIUM 12, OF WHITEHALL AT CAMINO REAL, A CONDOMINIUM

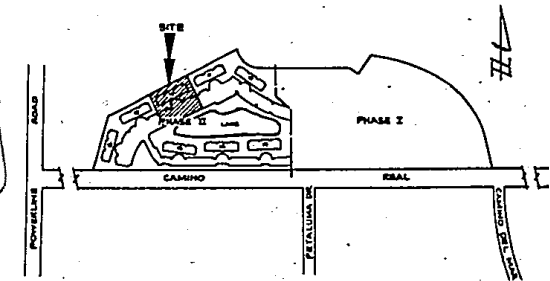
BOCA DEL MAR

EXHIBIT B

TO THE DECLARATION OF CONDOMINIUM



SURVEY AND SITE PLAN



VICINITY SKETCH

DESCRIPTION OF CONDOMINIUM NO. 12

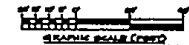
A CERTAIN PARCEL OF LAND LYING IN SECTION 27, TOWNSHIP 47 SOUTH, RANGE 42 EAST, PALM BEACH COUNTY, FLORIDA, BEING MORE PARTICULARLY DESCRIBED AS FOLLOWS:

COMMENCING AT THE SOUTHWEST CORNER OF THAT CERTAIN PARCEL OF LAND KNOWN AS TRACT 47, AS SAID IS SHOWN ON THE PLAT OF BOCA DEL MAR NO. 3, RECORDED IN PLAT BOOK 30, PAGES 82 THROUGH 84, INCLUSIVE, PUBLIC RECORDS OF PALM BEACH COUNTY, FLORIDA, THENCE NORTH 15°30'00" EAST BEARINGS MENTIONED HEREIN ARE IN THE MERIDIAN OF SAID TRACT 47 OF BOCA DEL MAR NO. 3, A DISTANCE OF 319.40 FEET; THENCE NORTH 61°53'13" EAST, A DISTANCE OF 274.50 FEET TO THE POINT OF BEGINNING; THENCE ALONG THE FOLLOWING NUMBERED COURSES:

1. NORTH 61°53'13" EAST, 223.13 FEET; THENCE...
2. SOUTH 28°06'47" EAST, 263.00 FEET; THENCE...
3. SOUTH 61°53'13" WEST, 136.53 FEET; THENCE...
4. SOUTH 77°59'13" WEST, 90.13 FEET; THENCE...
5. NORTH 28°06'47" WEST, 238.00 FEET, MORE OR LESS, TO THE POINT OF BEGINNING.

CONTAINING 1.322 ACRES, MORE OR LESS.

THIS INSTRUMENT PREPARED BY KENNETH L. SCARPE, AT THE OFFICE OF KENNETH L. SCARPE, INC., PROFESSIONAL LAND SURVEYORS, 2700 PCA BOULEVARD, SUITE 103, PALM BEACH GARDENS, FLORIDA 33410



SURVEYOR'S NOTES

1. THIS SURVEY PROVIDED FOR BOUNDARY AND AREA INFORMATION AND IS NOT A CONVEYANCE.
2. NO RECORD OF THE PUBLIC RECORDS HAS BEEN MADE OF THIS OFFICE.
3. RECORDS UNOBTAINABLE ARE AS SHOWN.
4. RECONSTRUCTION PROVIDED BY CLIENT.

SURVEYOR'S CERTIFICATION

I, KENNETH L. SCARPE, DO hereby certify that I am a duly licensed Professional Land Surveyor in the State of Florida, and that I am the author of the above described survey, and that the same was made by me or under my direct supervision and control, and that I am a duly licensed Professional Land Surveyor in the State of Florida, and that I am the author of the above described survey, and that the same was made by me or under my direct supervision and control.

CONDOMINIUM 12	
OF	
WHITEHALL AT CAMINO REAL	
A CONDOMINIUM	
KENNETH L. SCARPE, INC.	
PROFESSIONAL LAND SURVEYORS	
LAW FIRM, P.L.L.C., 2700 PCA BOULEVARD, SUITE 103, PALM BEACH GARDENS, FLORIDA 33410	
DATE OF SURVEY: 8-19-2010	DATE OF PLAT: 8-19-2010
DATE OF RECORDING: 8-19-2010	DATE OF RECORDING: 8-19-2010
DATE OF RECORDING: 8-19-2010	DATE OF RECORDING: 8-19-2010

This is not a certified copy

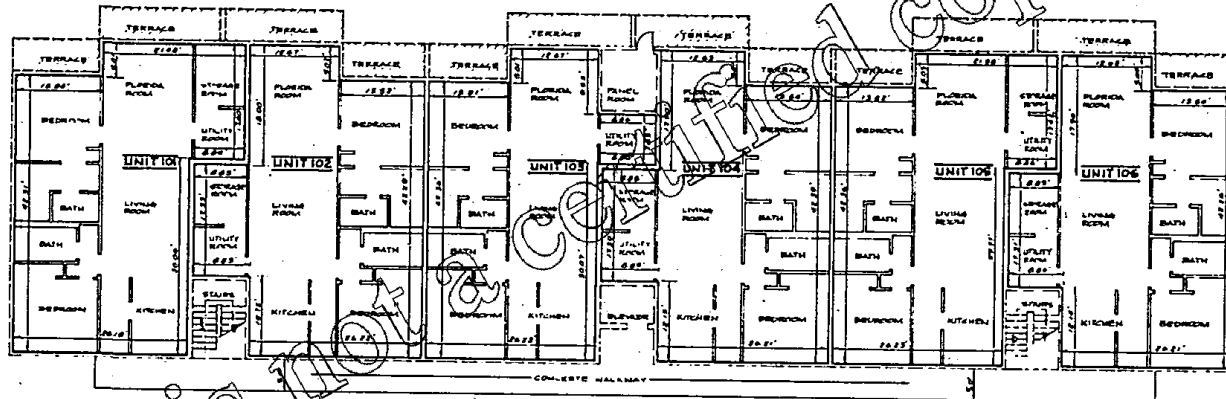
B4651 P0407

CONDOMINIUM 12, OF WHITEHALL AT CAMINO REAL, A CONDOMINIUM

BOCA DEL MAR

EXHIBIT B

TO THE DECLARATION OF CONDOMINIUM



FIRST FLOOR UNIT BOUNDARIES

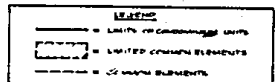
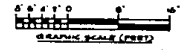
1ST FLOOR

FINISHED FLOOR ELEVATION: 16.96

FINISHED CEILING ELEVATION: 25.00



- NOTES**
1. IMPROVEMENTS SHOWN ARE EXISTING UNLESS OTHERWISE NOTED.
 2. ALL DIMENSIONS SHOWN IN THE CONDOMINIUM UNITS WHERE APPLICABLE ARE TO THE INTERIOR UNPAINTED FINISHED (OR UNFINISHED) SURFACE.
 3. ALL INTERIOR ANGLES IN THE CONDOMINIUM UNITS ARE 90° UNLESS OTHERWISE NOTED.
 4. ELEVATIONS SHOWN HEREON ARE IN FEET AND DECIMAL PARTS THEREOF AND REFER TO N.G.V.D., 1929.
 5. BENCHMARK IS 3-CUT ON TOP OF CURB AT FRONT OF MAINTENANCE & ELEVATOR CONTROL BUILDING. ELEVATION: 16.89 N.G.V.D., 1929.
 6. SEE SHEET 3 FOR EXTERIOR BUILDING DIMENSIONS.
 7. FINISH FLOOR AND FINISH CEILING ELEVATIONS ARE AS SHOWN.



CONDOMINIUM 12	
OF	
WHITEHALL AT CAMINO REAL	
A CONDOMINIUM	
KENNETH L. SCRAPE, J.M.	
PROFESSIONAL LAND SURVEYOR	
1977 REG. NO. 2441-0008	
DATE: 12/22/88	
SCALE: AS SHOWN	DATE: 12/22/88
BY: KLS	DATE: 12/22/88
CHECKED: KLS	DATE: 12/22/88

THIS INSTRUMENT PREPARED BY KENNETH L. SCRAPE, AT THE OFFICE OF KENNETH L. SCRAPE, INC., PROFESSIONAL LAND SURVEYORS, 2700 PCA BOULEVARD, SUITE 103, PALM BEACH GARDENS, FLORIDA 33410

This is not a certified copy

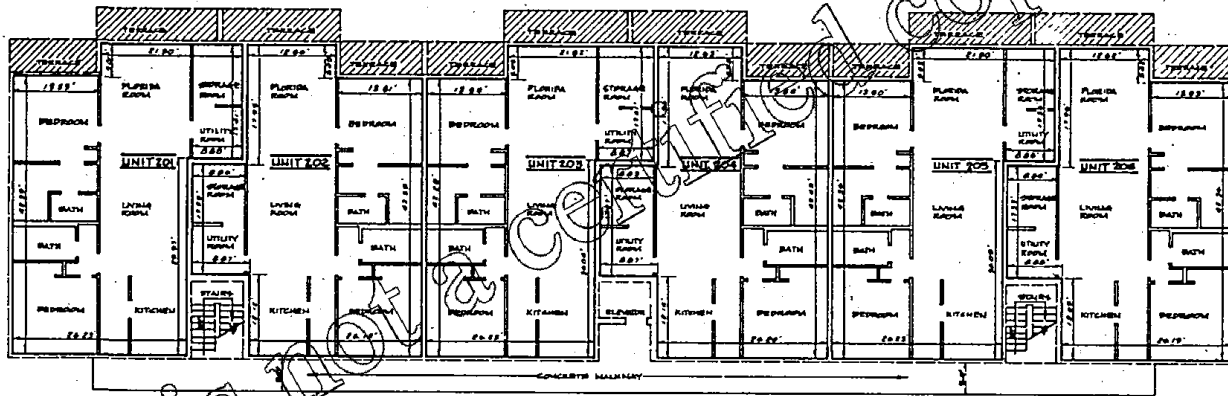
B4651 P0408

CONDOMINIUM 12, OF WHITEHALL AT CAMINO REAL, A CONDOMINIUM

BOCA DEL MAR

EXHIBIT B

TO THE DECLARATION OF CONDOMINIUM



SECOND FLOOR UNIT BOUNDARIES

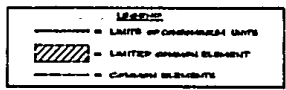
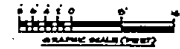
2ND FLOOR

FINISHED FLOOR ELEVATION- 20.00

FINISHED CEILING ELEVATION- 22.00



- NOTES**
1. IMPROVEMENTS SHOWN ARE EXISTING UNLESS OTHERWISE NOTED.
 2. ALL DIMENSIONS SHOWN IN THE CONDOMINIUM UNITS WHERE APPLICABLE ARE TO THE INTERIOR UNPAINTED FINISHED (OR UNFINISHED) SURFACE.
 3. ALL INTERIOR ANGLES IN THE CONDOMINIUM UNITS ARE 90° UNLESS OTHERWISE NOTED.
 4. ELEVATIONS SHOWN HEREON ARE IN FEET AND DECIMAL PARTS THEREOF AND REFER TO N.C.F.C. 1929.
 5. BENCHMARK IS 1'-0" ON TOP OF CURB AT FRONT OF MAINTENANCE & ELEVATOR CONTROL BUILDING. ELEVATION- 15.20 N.C.F.C. 1929.
 6. SEE SHEET 3 FOR EXTERIOR BUILDING DIMENSIONS.
 7. FINISH FLOOR AND FINISH CEILING ELEVATIONS ARE AS SHOWN.



CONDOMINIUM 12	
OF	
WHITEHALL AT CAMINO REAL	
A CONDOMINIUM	
KENNETH L. SCRAPE, JR.	
PROFESSIONAL LAND SURVEYOR	
LAKE PARK, FL., No. 644-6549	
FIELD/ISSUED BY	K. L. SCRAPE, JR.
DATE P.L.C.	MAY 01, 2009
DATE	10/25/09
BY	10/25/09

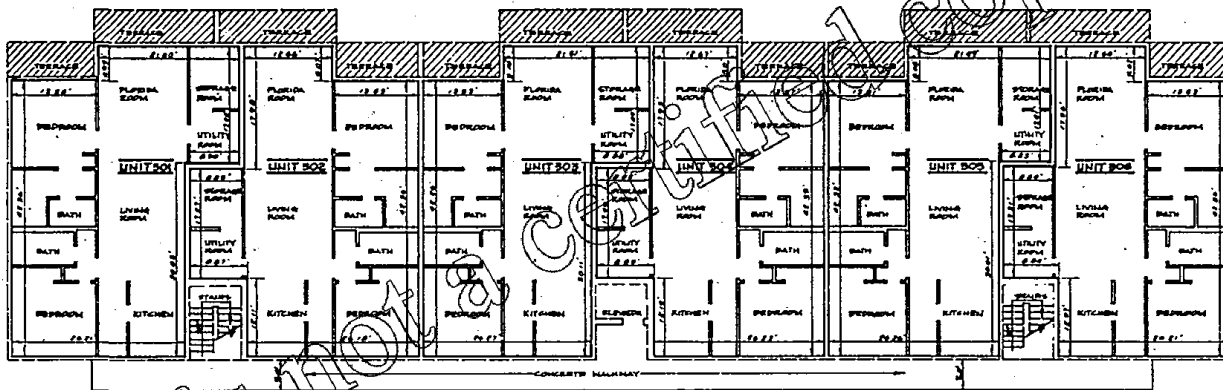
THIS INSTRUMENT PREPARED BY KENNETH L. SCRAPE, AT THE OFFICE OF KENNETH L. SCRAPE, INC., PROFESSIONAL LAND SURVEYORS, 2700 PGA BOULEVARD, SUITE 103, PALM BEACH GARDENS, FLORIDA 33410

This is not a certified copy

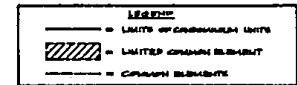
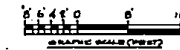
CONDOMINIUM 12, OF WHITEHALL AT CAMINO REAL, A CONDOMINIUM

B4651 P0409

BOCA DEL MAR EXHIBIT B TO THE DECLARATION OF CONDOMINIUM



- NOTES**
1. IMPROVEMENTS SHOWN ARE EXISTING UNLESS OTHERWISE NOTED.
 2. ALL DIMENSIONS SHOWN IN THE CONDOMINIUM UNITS WHERE APPLICABLE ARE TO THE INTERIOR UNPAINTED FINISHED (OR UNFINISHED) SURFACE.
 3. ALL INTERIOR ANGLES IN THE CONDOMINIUM UNITS ARE 90° UNLESS OTHERWISE NOTED.
 4. ELEVATIONS SHOWN HEREON ARE IN FEET AND DECIMAL PARTS THEREOF AND REFER TO N.C.V.D. 1929.
 5. BENCHMARK IS 1'-0" ON TOP OF CURB AT FRONT OF MAINTENANCE & ELEVATOR CONTROL BUILDING. ELEVATION -18.88 N.C.V.D., 1929.
 6. SEE SHEET 3 FOR EXTERIOR BUILDING DIMENSIONS.
 7. FINISH FLOOR AND FINISH CEILING ELEVATIONS ARE AS SHOWN.



THIRD FLOOR UNIT BOUNDARIES



3RD FLOOR
FINISHED FLOOR ELEVATION - 34.22
FINISHED CEILING ELEVATION - 42.22

This is not a certified copy

THIS INSTRUMENT PREPARED BY KENNETH L. SCRAPE, AT THE OFFICE OF KENNETH L. SCRAPE, INC., PROFESSIONAL LAND SURVEYORS, 2700 PGA BOULEVARD, SUITE 103, PALM BEACH GARDENS, FLORIDA 33410

CONDOMINIUM 12			
OF			
WHITEHALL AT CAMINO REAL A CONDOMINIUM			
KENNETH L. SCRAPE, INC.			
PROFESSIONAL LAND SURVEYORS			
LAKE PARK, FL., PH. 888-8048			
DATE: 10/28/2014	JOB NO. 12	BY: KLS	JOB NO. 12
OFFICE: PBC	DATE: 8-13-14	JOB: 12	JOB NO. 12
BY: KLS	DATE: 8-13-14	JOB: 12	JOB NO. 12

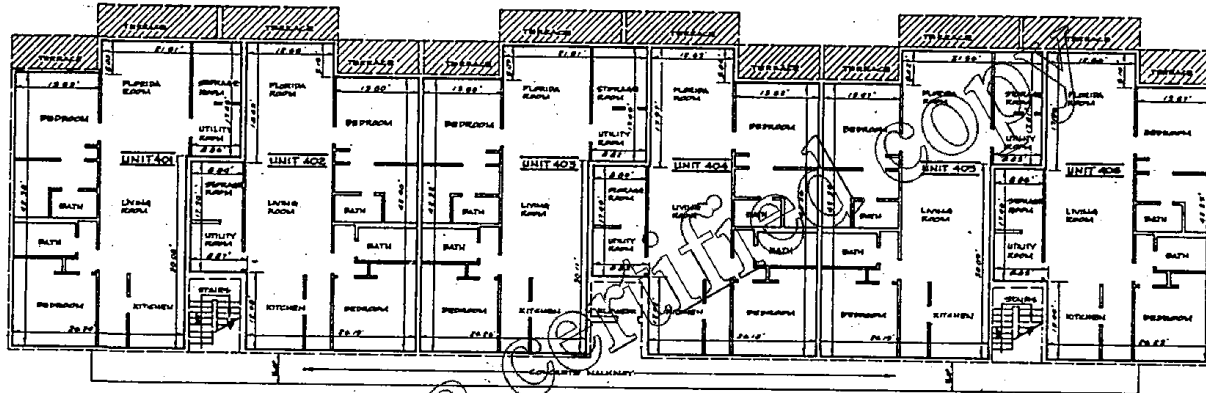
CONDOMINIUM 12, OF WHITEHALL AT CAMINO REAL, A CONDOMINIUM

B4651 P0410

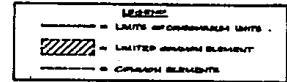
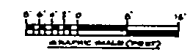
BOCA DEL MAR

EXHIBIT B

TO THE DECLARATION OF CONDOMINIUM



- NOTES**
1. IMPROVEMENTS SHOWN ARE EXISTING UNLESS OTHERWISE NOTED.
 2. ALL DIMENSIONS SHOWN IN THE CONDOMINIUM UNITS WHERE APPLICABLE ARE TO THE INTERIOR UNPAINTED FINISHED (OR UNFINISHED) SURFACE.
 3. ALL INTERIOR ANGLES IN THE CONDOMINIUM UNITS ARE 90° UNLESS OTHERWISE NOTED.
 4. ELEVATIONS SHOWN HEREON ARE IN FEET AND DECIMAL PARTS THEREOF AND REFER TO M.S.V.D. 1929.
 5. BENCHMARK IS X-CUT ON TOP OF CURB AT FRONT OF MAINTENANCE & ELEVATOR CONTROL BUILDING. ELEVATION - 28.25 M.S.V.D., 1929.
 6. SEE SHEET 3 FOR EXTERIOR BUILDING DIMENSIONS.
 7. FINISH FLOOR AND FINISH CEILING ELEVATIONS ARE AS SHOWN.



FOURTH FLOOR UNIT BOUNDARIES



4TH FLOOR
FINISHED FLOOR ELEVATION: 42.00
FINISHED CEILING ELEVATION: 50.00

This is not a certified copy

CONDOMINIUM 12			
OF			
WHITEHALL AT CAMINO REAL			
A CONDOMINIUM			
KENNETH L. SCRAPE, INC.			
PROFESSIONAL LAND SURVEYORS			
LAKE PARK, FL., PH. 884-8048			
FILE NO. 080074	PC 1	MC 25	CON 080000
ISSUE NO. 1	DATE 3-3-83	PREPARED BY	DATE 3-3-83
BY K.S.	FOR 12	SHEET 3	OF 7

THIS INSTRUMENT PREPARED BY KENNETH L. SCRAPE, AT THE OFFICE OF KENNETH L. SCRAPE, INC., PROFESSIONAL LAND SURVEYORS, 2700 PGA BOULEVARD, SUITE 103, PALM BEACH GARDENS, FLORIDA 33410