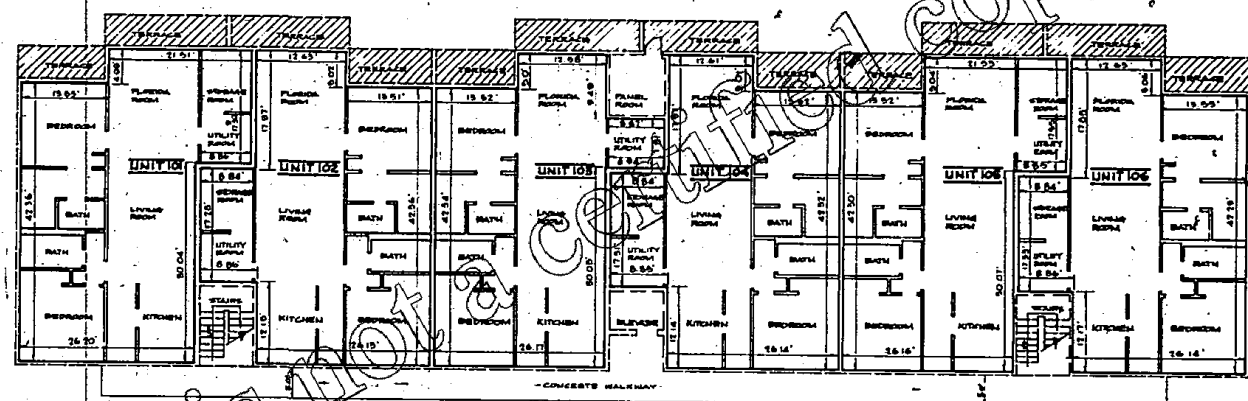


B4647 P0034

CONDOMINIUM 11, OF WHITEHALL AT CAMINO REAL, A CONDOMINIUM

BOCA DEL MAR
EXHIBIT B
TO THE DECLARATION OF CONDOMINIUM

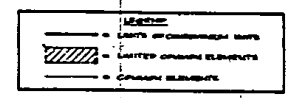


FIRST FLOOR UNIT BOUNDARIES

1st FLOOR
FINISHED FLOOR ELEVATION: 17.02
FINISHED CEILING ELEVATION: 25.14



- NOTES**
1. IMPROVEMENTS SHOWN ARE EXISTING UNLESS OTHERWISE NOTED.
 2. ALL DIMENSIONS SHOWN IN THE CONDOMINIUM UNITS WHERE APPLICABLE ARE TO THE INTERIOR UNPAINTED FINISHED (OR UNFINISHED) SURFACE.
 3. ALL INTERIOR ANGLES IN THE CONDOMINIUM UNITS ARE 90° UNLESS OTHERWISE NOTED.
 4. ELEVATIONS SHOWN HEREON ARE IN FEET AND DECIMAL PARTS THEREOF AND REFER TO M.C.T.S. 1929.
 5. BENCHMARK IS X-CUT ON TOP OF CURB AT FRONT OF MAINTENANCE & ELEVATOR CONTROL BUILDING. ELEVATION: 16.80 M.C.T.S. 1929.
 6. SEE SHEET 3 FOR EXTERIOR BUILDING DIMENSIONS.
 7. FINISH FLOOR AND FINISH CEILING ELEVATIONS ARE AS SHOWN.



| | |
|--------------------------------------|---------------------|
| CONDOMINIUM 11 | |
| OF | |
| WHITEHALL AT CAMINO REAL | |
| A CONDOMINIUM | |
| KENNETH L. SCRAPE, INC. | |
| PROFESSIONAL LAND SURVEYORS | |
| PALM BEACH GARDENS, FL. PH. 437-5400 | |
| FIELD SURVEYED | 11/2/02 TO 11/20/02 |
| OFFICE DATE | 11/21/02 |
| DATE PLOTTED | 11/21/02 |
| DATE | 11/21/02 |
| BY | 11/21/02 |

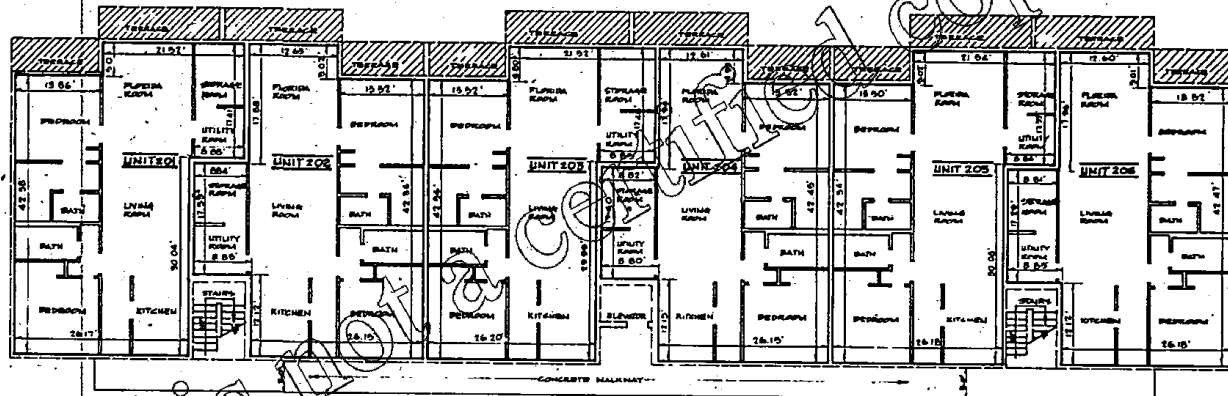
THIS INSTRUMENT PREPARED BY KENNETH L. SCRAPE, AT THE OFFICE OF KENNETH L. SCRAPE, INC., PROFESSIONAL LAND SURVEYORS, 2700 PMA BOULEVARD, SUITE 103, PALM BEACH GARDENS, FLORIDA 33410

This is not a certified copy

CONDOMINIUM 11, OF WHITEHALL AT CAMINO REAL, A CONDOMINIUM

B4647 P0035

BOCA DEL MAR EXHIBIT B TO THE DECLARATION OF CONDOMINIUM



SECOND FLOOR UNIT BOUNDARIES

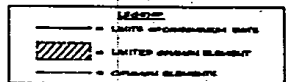
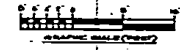
2ND FLOOR

FINISHED FLOOR ELEVATION= 25.63

FINISHED CEILING ELEVATION= 55.75



- NOTES
1. IMPROVEMENTS SHOWN ARE EXISTING UNLESS OTHERWISE NOTED.
 2. ALL DIMENSIONS SHOWN IN THE CONDOMINIUM UNITS WHERE APPLICABLE ARE TO THE EXTERIOR UNPAINTED FINISHED (OR UNFINISHED) SURFACE.
 3. ALL EXTERIOR ANGLES IN THE CONDOMINIUM UNITS ARE 90° UNLESS OTHERWISE NOTED.
 4. ELEVATIONS SHOWN HEREIN ARE IN FEET AND DECIMAL PARTS THEREOF AND REFER TO N.G.V.D., 1929.
 5. REFERENCE IS MADE TO TOP OF CURB AT FRONT OF MAINTENANCE & ELEVATOR CONTROL BUILDING. ELEVATION= 25.50, N.G.V.D., 1929.
 6. SEE SHEET 3 FOR EXTERIOR BUILDING DIMENSIONS.
 7. FINISH FLOOR AND FINISH CEILING ELEVATIONS ARE AS SHOWN.



CONDOMINIUM 11
OF
WHITEHALL AT CAMINO REAL
A CONDOMINIUM

KENNETH L. SCRAPER, INC.
PROFESSIONAL LAND SURVEYORS
PALM BEACH GARDENS, FL. PD 4871-8404

THIS INSTRUMENT PREPARED BY KENNETH L. SCRAPER, AT THE OFFICE OF KENNETH L. SCRAPER, INC., PROFESSIONAL LAND SURVEYORS, 2700 PMA BUILDING, SUITE 103, PALM BEACH GARDENS, FLORIDA 33410

| | | | |
|---------------|-----------|--------------|-----------|
| DATE PREPARED | 10/1/2023 | DATE PLOTTED | 10/1/2023 |
| PROJECT NO. | 11 | SCALE | AS SHOWN |
| DRAWN BY | MS | CHECKED BY | MS |

This is NOT a Certified Copy

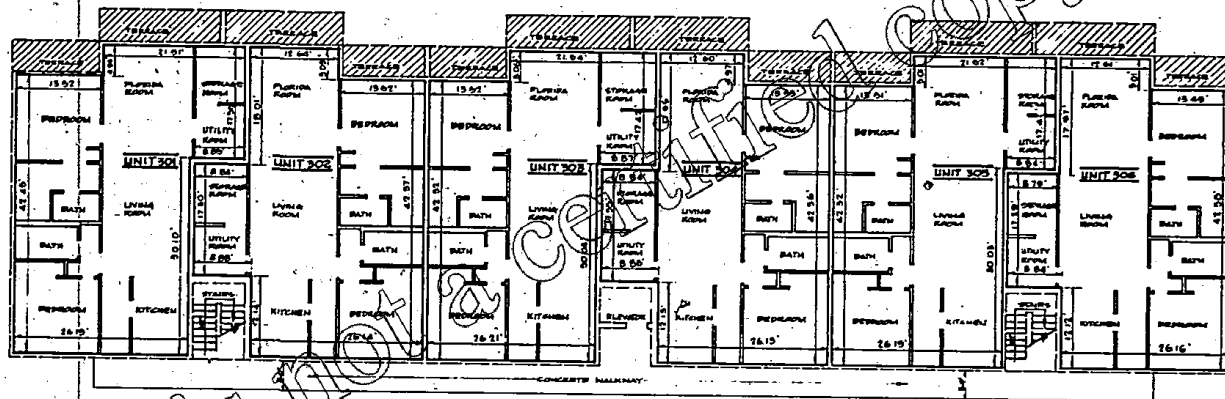
B4647 P0036

CONDOMINIUM 11, OF WHITEHALL AT CAMINO REAL, A CONDOMINIUM

BOCA DEL MAR

EXHIBIT B

TO THE DECLARATION OF CONDOMINIUM



THIRD FLOOR UNIT BOUNDARIES

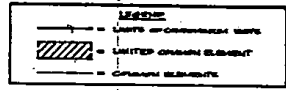
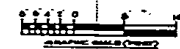
3RD FLOOR

FINISHED FLOOR ELEVATION: 54.22

FINISHED CEILING ELEVATION: 42.35



- NOTES**
1. IMPROVEMENTS SHOWN ARE EXISTING UNLESS OTHERWISE NOTED.
 2. ALL DIMENSIONS SHOWN IN THE CONDOMINIUM UNITS WERE APPLICABLE TO THE INTERIOR UNFINISHED (OR UNFINISHED) SURFACE.
 3. ALL EXTERIOR ANGLES IN THE CONDOMINIUM UNITS ARE 90° UNLESS OTHERWISE NOTED.
 4. ELEVATIONS SHOWN HEREIN ARE IN FEET AND DECIMAL PARTS THEREOF AND REFER TO M.C.V.D. 1929.
 5. BENCHMARK IS 2'-00" OR TOP OF CURB AT FRONT OF REINTERIOR & ELEVATOR CONTROL BUILDING. ELEVATION: 52.60 M.C.V.D. 1929.
 6. SEE SHEET 3 FOR EXTERIOR BUILDING DIMENSIONS.
 7. FINISH FLOOR AND FINISH CEILING ELEVATIONS ARE AS SHOWN.



| | | | |
|--------------------------------------|------|------|--------|
| CONDOMINIUM 11 | | | |
| OF | | | |
| WHITEHALL AT CAMINO REAL | | | |
| A CONDOMINIUM | | | |
| KENNETH L. SCRAPE, INC. | | | |
| PROFESSIONAL LAND SURVEYORS | | | |
| PALM BEACH GARDENS, FL. PH. 427-3401 | | | |
| FILED & RECORDED | IN | BOOK | AND BE |
| APPROX. DATE | DATE | NO. | AND BE |
| APPROX. DATE | DATE | NO. | AND BE |

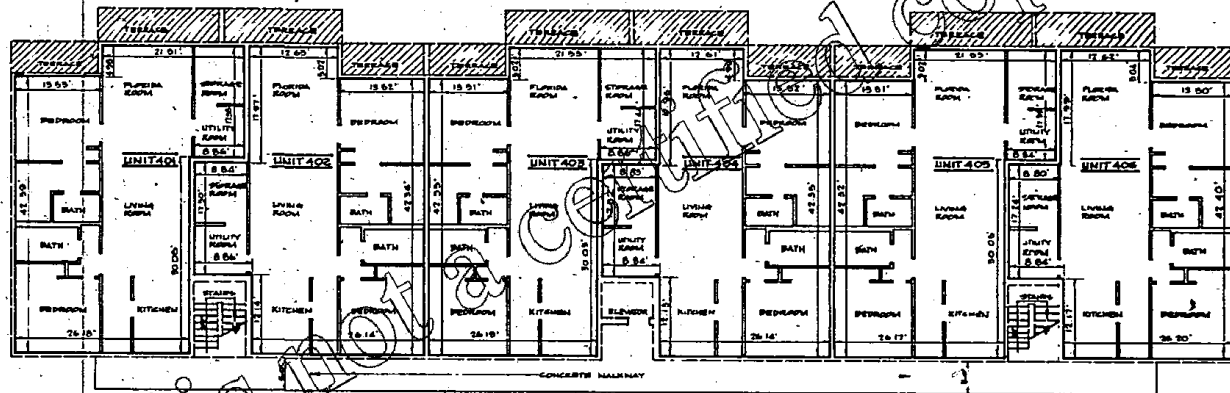
THIS INSTRUMENT PREPARED BY KENNETH L. SCRAPE, AT THE OFFICE OF KENNETH L. SCRAPE, INC., PROFESSIONAL LAND SURVEYORS, 2700 PGA BOULEVARD, SUITE 103, PALM BEACH GARDENS, FLORIDA 33410

This is not a certified copy

84647 P0037

CONDOMINIUM 11, OF WHITEHALL AT CAMINO REAL, A CONDOMINIUM

BOCA DEL MAR EXHIBIT B TO THE DECLARATION OF CONDOMINIUM



FOURTH FLOOR UNIT BOUNDARIES

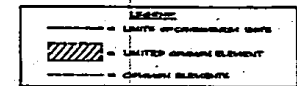
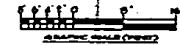
4TH FLOOR

FINISHED FLOOR ELEVATION- 42.82

FINISHED CEILING ELEVATION- 60.93



- NOTES**
1. DIMENSIONS SHOWN ARE EXISTING UNLESS OTHERWISE NOTED.
 2. ALL DIMENSIONS SHOWN IN THE CONDOMINIUM UNITS WHERE APPLICABLE ARE TO THE INTERIOR UNPAINTED FINISHED (OR UNFINISHED) SURFACE.
 3. ALL INTERIOR ANGLES IN THE CONDOMINIUM UNITS ARE 90° UNLESS OTHERWISE NOTED.
 4. ELEVATIONS SHOWN HEREON ARE IN FEET AND DECIMAL PARTS THEREOF AND REFER TO A.C.T.V.D. 1929.
 5. BENCHMARK IS 8-OUT ON TOP OF CURB AT FRONT OF MAINTENANCE & ELEVATOR CONTROL BUILDING. ELEVATION: +5.60' A.C.T.V.D. 1929.
 6. SEE SHEET 3 FOR EXTERIOR BUILDING DIMENSIONS.
 7. FINISH FLOOR AND FINISH CEILING ELEVATIONS ARE AS SHOWN.



| | | | |
|--------------------------------------|--------------|---------------|------------------|
| CONDOMINIUM 11 | | | |
| OF | | | |
| WHITEHALL AT CAMINO REAL | | | |
| A CONDOMINIUM | | | |
| KENNETH L. SCAPE, INC. | | | |
| PROFESSIONAL LAND SURVEYORS | | | |
| PALM BEACH GARDENS, FL. PH. 567-9400 | | | |
| DATE OF FIELDWORK | DATE OF PLAN | DATE OF ISSUE | DATE OF REVISION |
| 11/15/05 | 11/15/05 | 11/15/05 | 11/15/05 |

THIS INSTRUMENT PREPARED BY KENNETH L. SCAPE, AT THE OFFICE OF KENNETH L. SCAPE, INC., PROFESSIONAL LAND SURVEYORS, 2700 PGA BOULEVARD, SUITE 103, PALM BEACH GARDENS, FLORIDA 33410

This is not a Certified Copy