

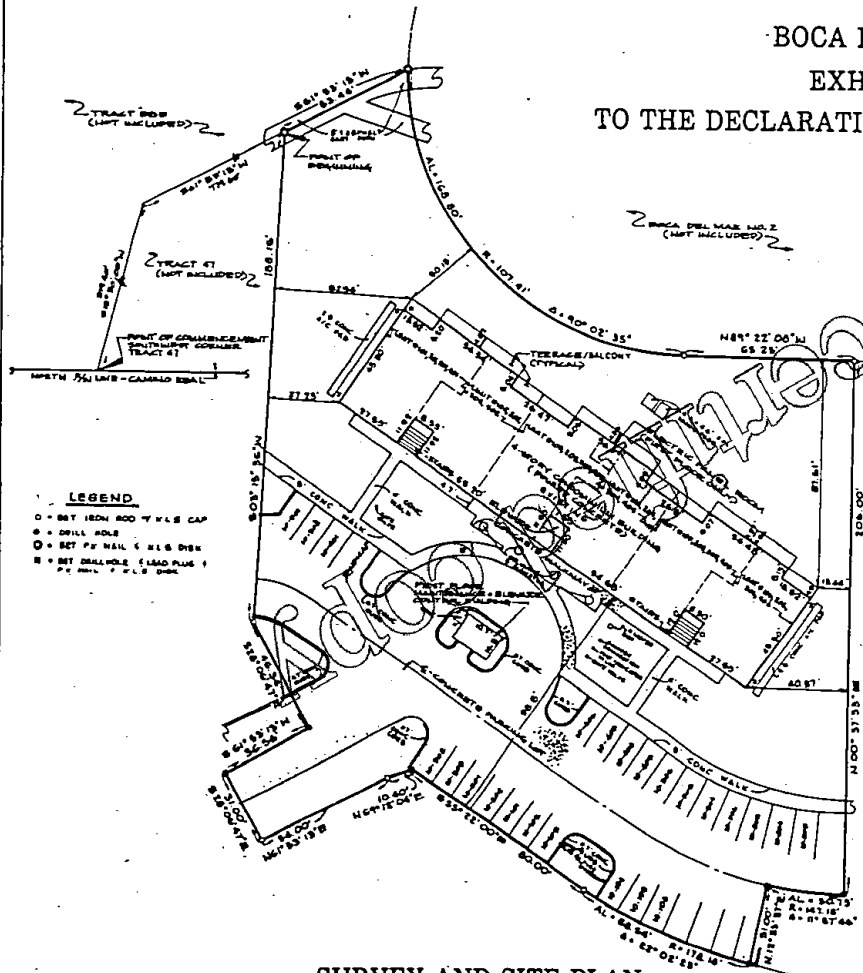
B4637 P0931

CONDOMINIUM 10, OF WHITEHALL AT CAMINO REAL, A CONDOMINIUM

BOCA DEL MAR

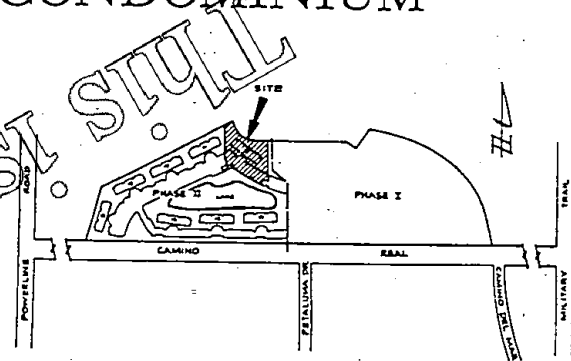
EXHIBIT B

TO THE DECLARATION OF CONDOMINIUM



LEGEND

- = 5/8" IRON ROD W/ 1/2" CAP
- = DRILL HOLE
- = SET #2 NAIL & 1/2" DISK
- = SET DRILLHOLE (LAND PLUG) 1" DIA. 7" O.D. DISK



VICINITY SKETCH

DESCRIPTION OF CERTAIN PARCEL

- NOTES**
1. IMPROVEMENTS SHOWN HEREON ARE EXISTING UNLESS OTHERWISE NOTED.
 2. SEE SHEETS 4 THROUGH 7 FOR DETAILS OF UNIT BUILDINGS.

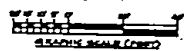
THIS INSTRUMENT PREPARED BY KENNETH L. SCRAPE, AT THE OFFICE OF KENNETH L. SCRAPE, INC., PROFESSIONAL LAND SURVEYORS, 2700 PGA BLVD., SUITE 303, PALM BEACH GARDENS, FLORIDA 33410.

A CERTAIN PARCEL OF LAND LYING IN SECTION 27, TOWNSHIP 46-30N, RANGE 42-EAST, PALM BEACH COUNTY, FLORIDA, BEING MORE PARTICULARLY IDENTIFIED AS FOLLOWS:

COMMENCING AT THE SOUTHWEST CORNER OF THAT CERTAIN PARCEL OF LAND KNOWN AS TRACT 47, AS SHOWN ON THE PLAT OF BOCA DEL MAR NO. 3, RECORDED IN PLAT BOOK 30, PAGES 82 THROUGH 84, INCLUDING PUBLIC RECORDS OF PALM BEACH COUNTY, FLORIDA, THENCE NORTH 15° 30' 00" EAST (BEARING MENTIONED HEREIN ARE IN THE MERIDIAN OF SAID TRACT 47 OF BOCA DEL MAR NO. 3) A DISTANCE OF 319.40 FEET; THENCE NORTH 61° 53' 13" EAST, A DISTANCE OF 779.60 FEET TO THE POINT OF BEGINNING; THENCE ALONG THE FOLLOWING NUMBERED COURSES:

1. SOUTH 03° 15' 36" WEST, 108.16 FEET; THENCE...
2. SOUTH 28° 06' 47" EAST, 86.34 FEET; THENCE...
3. SOUTH 61° 53' 13" WEST, 86.56 FEET; THENCE...
4. SOUTH 28° 06' 47" EAST, 31.00 FEET; THENCE...
5. NORTH 01° 53' 13" EAST, 54.00 FEET; THENCE...
6. NORTH 69° 12' 04" EAST, 10.40 FEET; THENCE...
7. SOUTH 55° 22' 00" EAST, 80.00 FEET; THENCE...
8. SOUTHEASTERLY, ALONG AN ARC OF A 178.18 FOOT RADIUS CURVE, CONCAVE NORTHEASTERLY, (WHOSE CHORD BEARS SOUTH 44° 23' 12" EAST) AN ARC DISTANCE OF 68.54 FEET; THENCE...
9. NORTH 12° 35' 37" EAST, 31.00 FEET; THENCE...
10. EASTERLY ALONG AN ARC OF A 147.18 FOOT RADIUS CURVE, CONCAVE NORTHERLY, (WHOSE CHORD BEARS SOUTH 63° 23' 32" EAST) AN ARC DISTANCE OF 30.73 FEET; THENCE...
11. NORTH 00° 32' 53" EAST, 206.00 FEET; THENCE...
12. NORTH 89° 22' 08" WEST, 65.25 FEET; THENCE...
13. NORTHEASTERLY, ALONG AN ARC OF A 107.41 FOOT RADIUS CURVE, CONCAVE NORTHEASTERLY, (WHOSE CHORD BEARS NORTH 44° 20' 46" WEST) AN ARC DISTANCE OF 148.80 FEET; THENCE...
14. SOUTH 61° 53' 13" WEST, 53.44 FEET, MORE OR LESS, TO THE POINT OF BEGINNING.

CONTAINING 1.174 ACRES, MORE OR LESS.



SURVEYOR'S NOTES

1. THIS SURVEY INSTRUMENT FOR PART OF A PUBLIC COMMON LANE AND IS NOT A CONVEYANCE.
2. AN ORDER OF THE PUBLIC UTILITIES AND COMMUNICATIONS COMMISSION OF THE STATE OF FLORIDA, DATED 11/11/78, AUTHORIZES THE CONVEYANCE OF THIS COMMON LANE TO THE STATE OF FLORIDA.
3. ALL DIMENSIONS SHOWN ARE AS SHOWN.
4. ANY DISCREPANCIES BETWEEN THIS SURVEY AND ANY OTHER SURVEY SHALL BE TO THE BENEFIT OF THE STATE OF FLORIDA.

SURVEYOR'S CERTIFICATION

I, KENNETH L. SCRAPE, being of the age of 48 years, do hereby certify that I am a duly licensed Professional Land Surveyor in the State of Florida, and that I am the author of the above described instrument, and that I am a resident of the State of Florida, and that I am a resident of the State of Florida, and that I am a resident of the State of Florida.

Kenneth L. Scrape
 KENNETH L. SCRAPE, INC.
 PROFESSIONAL LAND SURVEYORS
 2700 PGA BLVD., SUITE 303
 PALM BEACH GARDENS, FLORIDA 33410

CONDOMINIUM 10			
OF			
WHITEHALL AT CAMINO REAL,			
A CONDOMINIUM			
KENNETH L. SCRAPE, INC.			
PROFESSIONAL LAND SURVEYORS			
LAKELAND, FLORIDA 33805			
FILE #	DATE	BY	REV.
100-111111-1	11/11/78	KS	1
100-111111-2	11/11/78	KS	1
100-111111-3	11/11/78	KS	1

SURVEY AND SITE PLAN

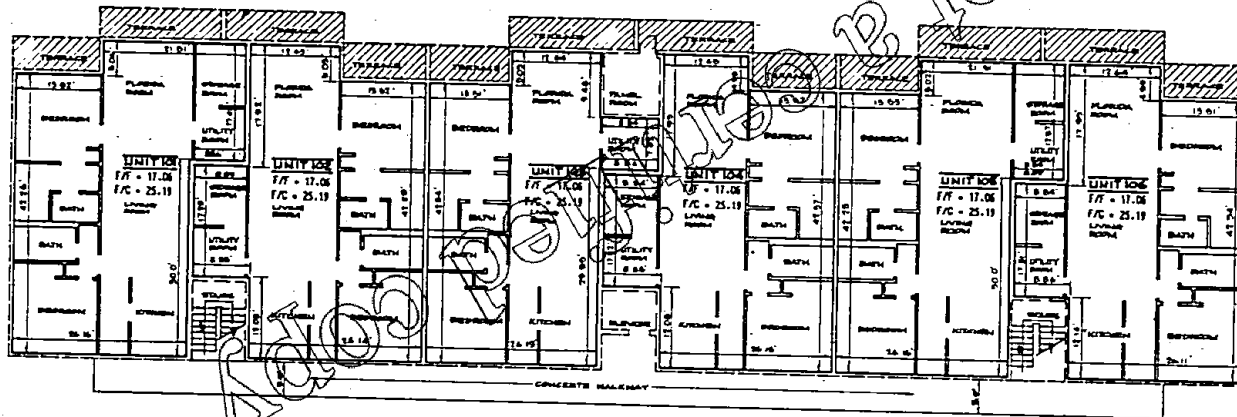
B4637 P0932

CONDOMINIUM 10, OF WHITEHALL AT CAMINO REAL, A CONDOMINIUM

BOCA DEL MAR

EXHIBIT B

TO THE DECLARATION OF CONDOMINIUM

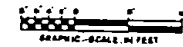


FIRST FLOOR UNIT BOUNDARIES



NOTES

1. IMPROVEMENTS SHOWN HEREON ARE EXISTING UNLESS OTHERWISE NOTED.
2. ALL DIMENSIONS SHOWN IN THE CONDOMINIUM UNITS WHERE APPLICABLE ARE TO THE INTERIOR UNPAINTED FINISHED (OR UNFINISHED) SURFACE.
3. ALL INTERIOR ANGLES IN THE CONDOMINIUM UNITS ARE 90° UNLESS OTHERWISE NOTED.
4. ELEVATIONS SHOWN HEREON ARE IN FEET AND DECIMAL PARTS THEREOF AND REFER TO N.G.V.D., 1929.
5. BENCHMARK IS 1'-CUT ON TOP OF CURB AT FRONT OF FIRST FLOOR MAINTENANCE & ELEVATOR CONTROL BUILDING. ELEVATION = 25.85 N.G.V.D., 1929.
6. SEE SHEET 3 FOR EXTERIOR BUILDING DIMENSIONS.
7. FINISH FLOOR AND FINISH CEILING ELEVATIONS ARE AS SHOWN.



LEGEND

- UNIT BOUNDARIES
- LIMITED COMMON ELEMENTS
- COMMON ELEMENTS
- FF = FINISH FLOOR ELEVATION
- F/C = FINISH CEILING ELEVATION

CONDOMINIUM 10		
OF		
WHITEHALL AT CAMINO REAL, A CONDOMINIUM		
KENNETH L. SCRAPE, INC. PROFESSIONAL LAND SURVEYORS LAKE PARK FL., P.O. BOX 2048		
FILE #	DATE	BY
2010-000000	11/10/10	KS
DATE	BY	BY
11/10/10	KS	KS

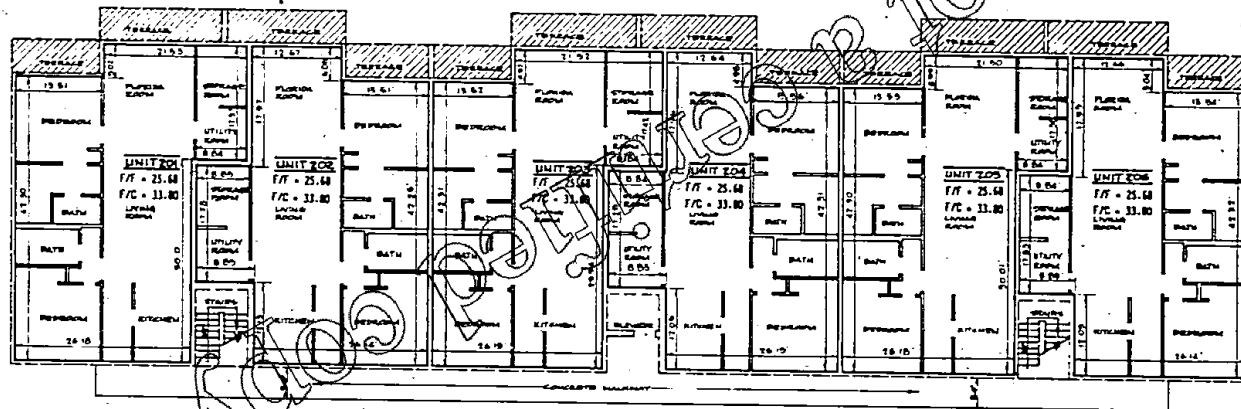
B4637 P0933

CONDOMINIUM 10, OF WHITEHALL AT CAMINO REAL, A CONDOMINIUM

BOCA DEL MAR

EXHIBIT B

TO THE DECLARATION OF CONDOMINIUM



SECOND FLOOR UNIT BOUNDARIES



- NOTES**
1. IMPROVEMENTS SHOWN HEREIN ARE EXISTING UNLESS OTHER NOTED.
 2. ALL DIMENSIONS SHOWN IN THE CONDOMINIUM UNITS IS APPLICABLE ARE TO THE INTERIOR UNPAINTED FINISHED UNFINISHED SURFACE.
 3. ALL INTERIOR ANGLES IN THE CONDOMINIUM UNITS ARE 90° UNLESS OTHERWISE NOTED.
 4. ELEVATIONS SHOWN HEREIN ARE IN FEET AND DECIMAL PART THEREOF AND REFER TO N.C.S.Y.D., 1929.
 5. BENCHMARK IS 3'-0" ON TOP OF CURB AT FRONT OF FIRST FLR MAINTENANCE & ELEVATOR CONTROL BUILDING. ELEVATION = 25.83 N.C.S.Y.D., 1929.
 6. SEE SHEET 3 FOR EXTERIOR BUILDING DIMENSIONS.
 7. FINISH FLOOR AND FINISH CEILING ELEVATIONS ARE AS SHOWN.



LEGEND

- LIMITS OF CONDOMINIUM UNITS
- ▨ LIMITED COMMON ELEMENT
- COMMON ELEMENTS
- F/F = FINISH FLOOR ELEVATION
- F/C = FINISH CEILING ELEVATION

CONDOMINIUM 10			
OF			
WHITEHALL AT CAMINO REAL			
A CONDOMINIUM			
KENNETH L. SCARPE, INC.			
PROFESSIONAL LAND SURVEYORS			
LAKE PARK FL., PH. 544-8848			
FIELD SURVEILLANT	J. L. SCARPE	DATE	10/20/98
OFFICE MAN	DATE	10/20/98	BY
BY	DATE	10/20/98	BY

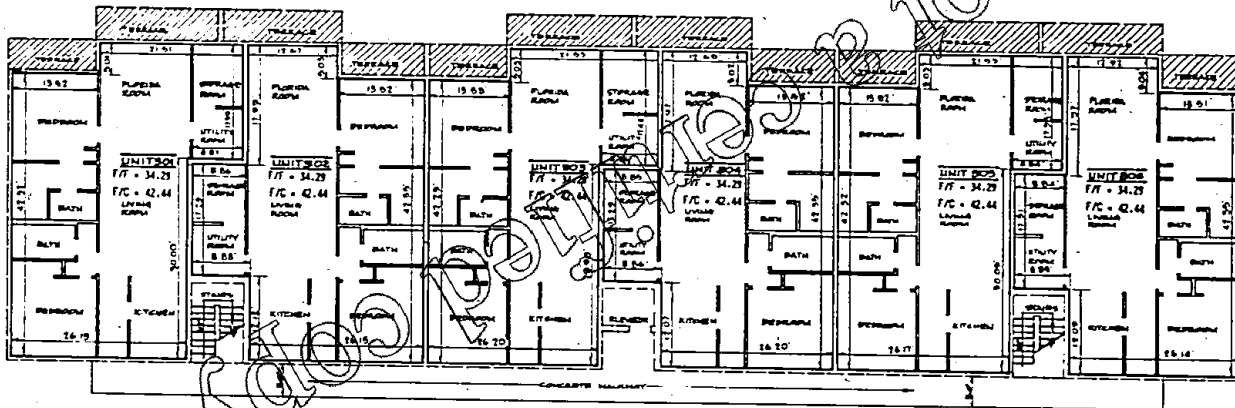
1637 P0934

CONDOMINIUM 10, OF WHITEHALL AT CAMINO REAL, A CONDOMINIUM

BOCA DEL MAR

EXHIBIT B

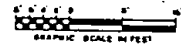
TO THE DECLARATION OF CONDOMINIUM



THIRD FLOOR UNIT BOUNDARIES



- NOTES
1. IMPROVEMENTS SHOWN HEREIN ARE EXISTING UNLESS OTHERWISE NOTED.
 2. ALL DIMENSIONS SHOWN IN THE CONDOMINIUM UNITS WERE APPLICABLE ARE TO THE EXTERIOR UNPAINTED FINISHED (OR UNFINISHED) SURFACE.
 3. ALL INTERIOR ANGLES IN THE CONDOMINIUM UNITS ARE 90° UNLESS OTHERWISE NOTED.
 4. ELEVATIONS SHOWN HEREIN ARE IN FEET AND DECIMAL PARTS THEREOF AND REFER TO N.C.Y.D., 1929.
 5. RECONSTRUCTION IS X-CUT ON TOP OF CURB AT FRONT OF FIRST FLOOR MAINTENANCE & ELEVATOR CONTROL BUILDING. ELEVATION = 10.00 N.C.Y.D., 1929.
 6. SEE SHEET 3 FOR EXTERIOR BUILDING DIMENSIONS.
 7. FINISH FLOOR AND FINISH CEILING ELEVATIONS ARE AS SHOWN.



LEGEND	
	LIMITS OF CONDOMINIUM UNITS
	LIMITED COMMON ELEMENT
	COMMON ELEMENTS
	FINISH FLOOR ELEVATIONS
	FINISH CEILING ELEVATIONS

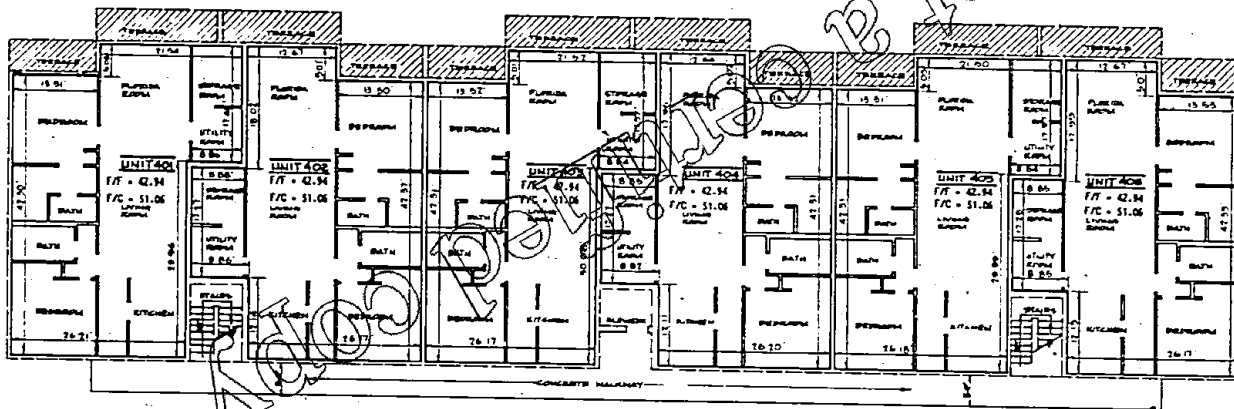
CONDOMINIUM 10	
OF	
WHITEHALL AT CAMINO REAL A CONDOMINIUM	
KENNETH L. SCRAPE, INC.	
PROFESSIONAL LAND SURVEYORS	
LAW FIRM: P.L.L.C. 844-8048	
FILED & MAP/LEN	1 02 22
DATE: 8-15-78	BY: [Signature]
SCALE: 1" = 20'	DATE: 8-15-78
BY: [Signature]	DATE: 8-15-78

CONDOMINIUM 10, OF WHITEHALL AT CAMINO REAL, A CONDOMINIUM

BOCA DEL MAR

EXHIBIT B

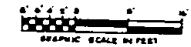
TO THE DECLARATION OF CONDOMINIUM



FOURTH FLOOR UNIT BOUNDARIES



- NOTES
1. IMPROVEMENTS SHOWN HEREIN ARE EXISTING UNLESS OTHERWISE NOTED.
 2. ALL DIMENSIONS SHOWN IN THE CONDOMINIUM UNITS WHERE APPLICABLE ARE TO THE INTERIOR UNPAINTED FINISHED (OR UNFINISHED) SURFACE.
 3. ALL INTERIOR ANGLES IN THE CONDOMINIUM UNITS ARE 90° UNLESS OTHERWISE NOTED.
 4. ELEVATIONS SHOWN HEREIN ARE IN FEET AND DECIMAL PARTS THEREOF AND REFER TO N.G.V.D., 1929.
 5. BENCHMARK IS 2'-OUT ON TOP OF CURB AT FRONT OF FIRST FLOOR MAINTENANCE & ELEVATOR CONTROL BUILDING. ELEVATION = 52.82 N.G.V.D., 1929.
 6. SEE SHEET 3 FOR EXTERIOR BUILDING DIMENSIONS.
 7. FINISH FLOOR AND FINISH CEILING ELEVATIONS ARE AS SHOWN.



LEGEND	
	LIMITS OF CONDOMINIUM UNITS
	LIMITED COMMON ELEMENT
	COMMON ELEMENTS
F/F	FINISH FLOOR ELEVATION
F/C	FINISH CEILING ELEVATION

CONDOMINIUM 10	
OF	
WHITEHALL AT CAMINO REAL, A CONDOMINIUM	
KENNETH L. SCRAPPE, INC. PROFESSIONAL LAND SURVEYORS LAKE PARK FL., PH. 844-8848	
FIELD REVISIONS	DATE
OFFICE REVISIONS	DATE
DATE	DATE